



Special Daily Weather Report 30 September, 2015

Monsoon Watch

- The Southwest Monsoon has been **Active** over Kerala during past 24 hours ending at 0830 hrs. IST of today.
- The withdrawal line of southwest monsoon passes through Dharchula, Etawah, Guna, Ratlam, Ahmedabad, Dwarka, Lat.22.0°N/Long. 65.0°E and Lat.22.0°N/Long. 60.0°E. **(Fig.1)**
- Spatial distribution of rainfall and monsoon activity are enclosed in **(Table-1)**.
- Latest Satellite Image of INSAT 3D is enclosed **(Fig. 2)**.

Seasonal Rainfall (in mm) from 1st June To 30 September 2015

Region	Actual	Normal	% Departure from Long Period Average
All India	760.6	887.5	-14%
East & Northeast India	1317.5	1438.3	-8%
Northwest India	510.6	615.0	-17%
Central India	815.5	975.5	-16%
South Peninsula	605.7	716.1	-15%

- Meteorological Sub-divisionwise 5-day rainfall forecast is shown in **(Table-2)**.
- Sub-divisionwise rainfall recorded from 0830 hrs IST of yesterday to 0830 hrs IST of today is given in **(Table-3)**.

Warning (Fig.3)

30 September (Day1): ♦ Heavy to very heavy rainfall would occur at isolated places over Kerala and heavy rainfall would occur at isolated places over Coastal Karnataka, interior Tamilnadu and Lakshadweep.

01 October (Day2): ♦ Heavy rainfall would occur at isolated places over Coastal Andhra Pradesh, interior Tamilnadu, Coastal Karnataka, South Interior Karnataka and Kerala.

02 October (Day 3): ♦ Heavy rainfall would occur at isolated places over Coastal Karnataka and South Interior Karnataka.

03 October (Day 4): ♦ No weather warning.

04 October (Day5): ♦ No weather warning.

Weather Outlook for subsequent 2 days (from 05 October to 07 October, 2015)

- ♦ Rain/thundershowers would occur at many places over Andaman & Nicobar Islands.
- ♦ Rain/thundershowers would occur at a few places over northeast and peninsular India and at isolated places over adjoining east & central India.

Legend:

Probability of occurrence	Terminology	Probability of occurrence	Terminology
≤25%	Could Occur	51-75%	Would Occur
26-50%	May Occur	76-100%	Will Occur

Note: This is last Special Daily Weather Report of the Southwest Monsoon Season-2015.

Fig-1

30 September 2015

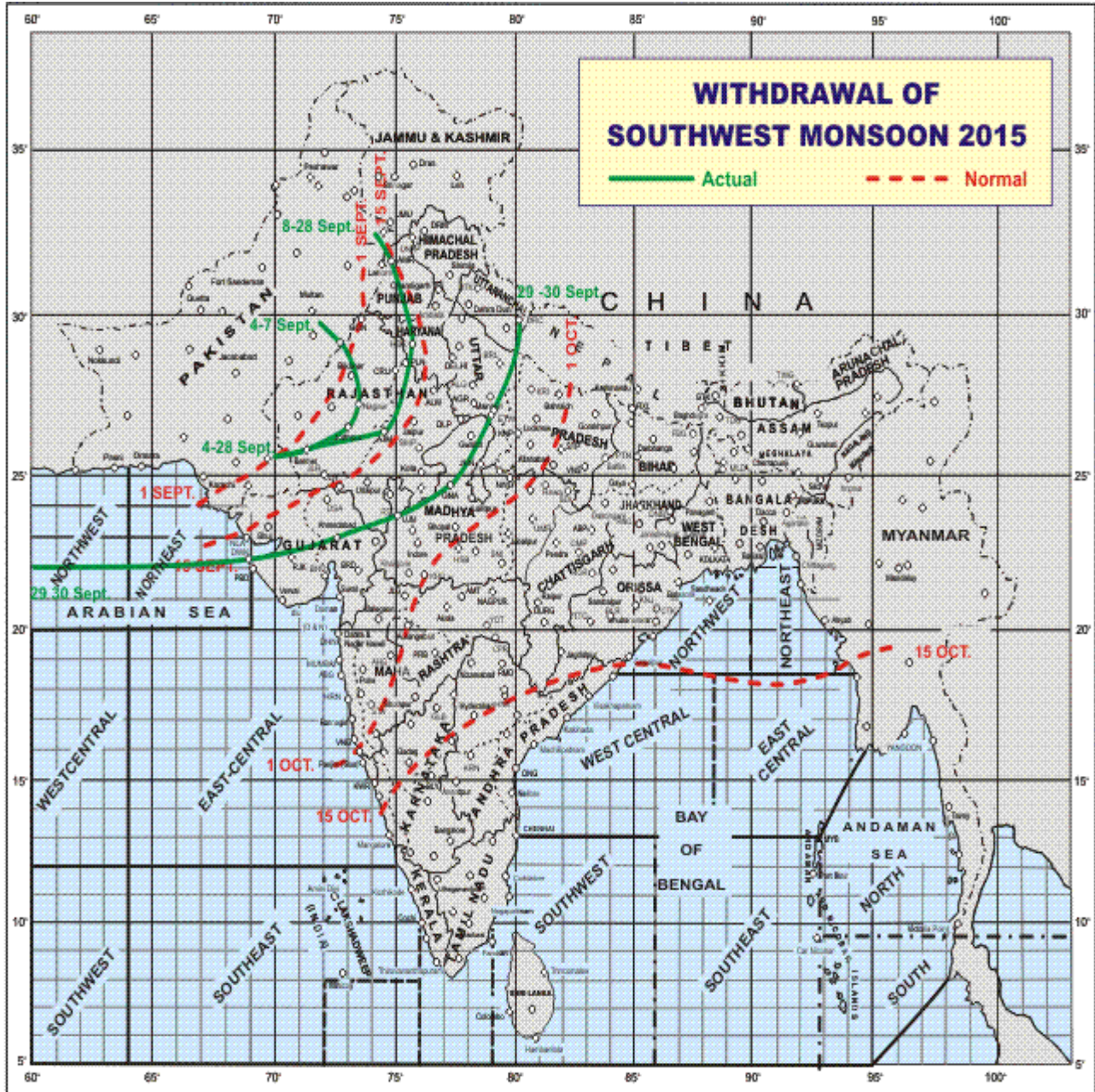


Table-1

Rainfall Distribution & Monsoon Activity	30 September 2015
---	--------------------------

S.NO.	METEOROLOGICAL SUB-DIVISIONS	RAINFALL DISTRIBUTION	MONSOON ACTIVITY
1	Andaman & Nicobar Islands	FWS	N
2	Arunachal Pradesh	ISOL	
3	Assam & Meghalaya	DRY	
4	Nagaland, Manipur, Mizoram & Tripura	ISOL	
5	Sub-Himalayan West Bengal & Sikkim	DRY	
6	Gangetic West Bengal	DRY	
7	Odisha	ISOL	
8	Jharkhand	DRY	
9	Bihar	DRY	
10	East Uttar Pradesh	DRY	
11	West Uttar Pradesh	DRY	
12	Uttarakhand	DRY	
13	Haryana Chandigarh & Delhi	DRY	
14	Punjab	DRY	
15	Himachal Pradesh	DRY	
16	Jammu & Kashmir	DRY	
17	West Rajasthan	DRY	
18	East Rajasthan	DRY	
19	West Madhya Pradesh	DRY	
20	East Madhya Pradesh	DRY	
21	Gujarat region. Daman, Dadra & Nagar Haveli	DRY	
22	Saurashtra Kutch & Diu	DRY	
23	Konkan & Goa	ISOL	
24	Madhya Maharashtra	DRY	
25	Marathawada	DRY	
26	Vidarbha	DRY	
27	Chhattisgarh	DRY	
28	Coastal Andhra Pradesh	ISOL	
29	Telangana	ISOL	
30	Rayalaseema	ISOL	
31	Tamilnadu & Puducherry	SCT	N
32	Coastal Karnataka	SCT	
33	North Interior Karnataka	SCT	
34	South Interior Karnataka	SCT	N
35	Kerala	WS	ACTIVE
36	Lakshadweep	WS	
LEGEND			
WS	Widespread / Most Places (More than 75%)	ISOL	Isolated (Less than 25%)
FWS	Fairly widespread / Many Places (51%-75%)	DRY	Dry (Very light/Nil rainfall)
SCT	Scattered / Few Places (25%-50%)	N	Normal

Table-2

5-Day Rainfall Forecast

Met-Sub-Division	30-Sep Today	01Oct Thu	02Oct Fri	03Oct Sat	04Oct Sun
1. Andaman & Nicobar Islands	FWS	FWS	SCT	SCT	FWS
2. Arunachal Pradesh	DRY	ISOL	ISOL	SCT	ISOL
3. Assam & Meghalaya	ISOL	ISOL	SCT	SCT	ISOL
4. N. M. M. & T.	ISOL	SCT	FWS	FWS	SCT
5. S.H. West Bengal & Sikkim	DRY	ISOL	ISOL	SCT	SCT
6. Gangetic West Bengal	DRY	ISOL	ISOL	ISOL	ISOL
7. Odisha	ISOL	ISOL	SCT	SCT	SCT
8. Jharkhand	DRY	DRY	ISOL	ISOL	ISOL
9. Bihar	DRY	DRY	ISOL	ISOL	ISOL
10. East Uttar Pradesh	DRY	DRY	ISOL	ISOL	DRY
11. West Uttar Pradesh	DRY	DRY	DRY	DRY	DRY
12. Uttarakhand	DRY	DRY	DRY	DRY	DRY
13. Haryana, Chd & Delhi	DRY	DRY	DRY	DRY	DRY
14. Punjab	DRY	DRY	DRY	DRY	DRY
15. Himachal Pradesh	DRY	DRY	DRY	DRY	DRY
16. Jammu & Kashmir	DRY	DRY	DRY	DRY	DRY
17. West Rajsthan	DRY	DRY	DRY	DRY	DRY
18. East Rajasthan	DRY	DRY	DRY	DRY	DRY
19. West Madhya Pradesh	DRY	DRY	DRY	DRY	DRY
20. East Madhya Pradesh	DRY	DRY	ISOL	ISOL	DRY
21. Gujarat Region	DRY	DRY	DRY	DRY	DRY
22. Saurashtra & Kutch	DRY	DRY	DRY	DRY	DRY
23. Konkan & Goa	ISOL	SCT	SCT	SCT	ISOL
24. Madhya Maharashtra	ISOL	ISOL	ISOL	ISOL	ISOL
25. Marathawada	ISOL	ISOL	SCT	SCT	ISOL
26. Vidharbha	ISOL	ISOL	ISOL	SCT	ISOL
27. Chhattisgarh	ISOL	ISOL	ISOL	SCT	SCT
28. Coastal Andhra Pradesh	FWS	FWS	FWS	SCT	SCT
29. Telangana	ISOL	SCT	FWS	FWS	SCT
30. Rayalaseema	SCT	SCT	FWS	FWS	SCT
31. Tamilnadu & Puducherry	FWS	FWS	SCT	SCT	ISOL
32. Coastal Karnataka	FWS	FWS	FWS	FWS	SCT
33. North Interior Karnataka	FWS	FWS	SCT	SCT	SCT
34. South Interior Karnataka	FWS	FWS	FWS	SCT	SCT
35. Kerala	WS	FWS	FWS	SCT	SCT
36. Lakshadweep	WS	FWS	FWS	SCT	SCT

% Station Reporting Rainfall

% Stations	Category	% Stations	Category
76-100	Widespread (WS/Most Places)	26-50	Scattered (SCT/ A Few Places)
51-75	Fairly Widespread (FWS/ Many Places)	1-25	Isolated (ISOL)
No Rain	Dry		

(Back)

Fig-2

Latest Satellite Image of INSAT 3-D 30 September 2015

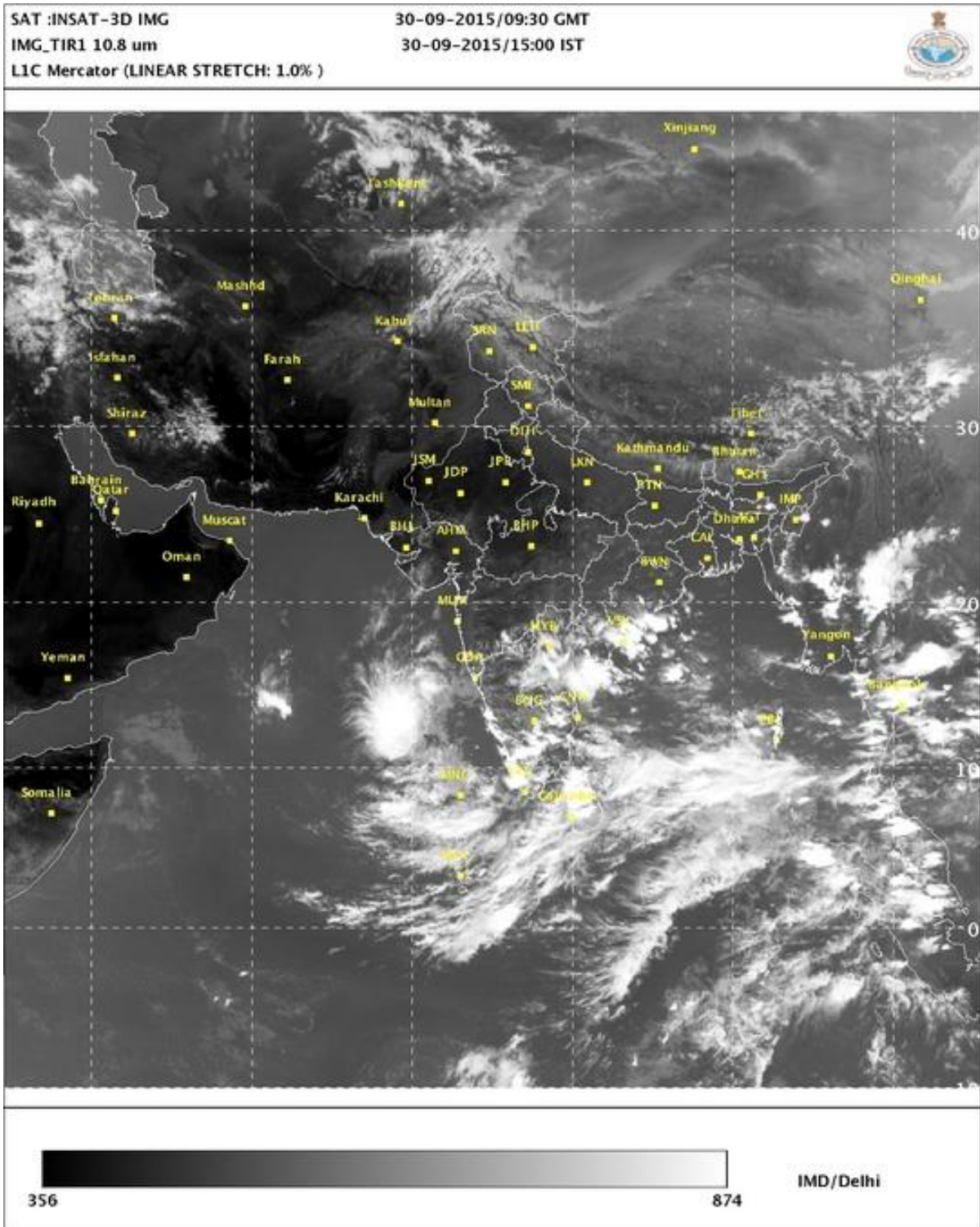
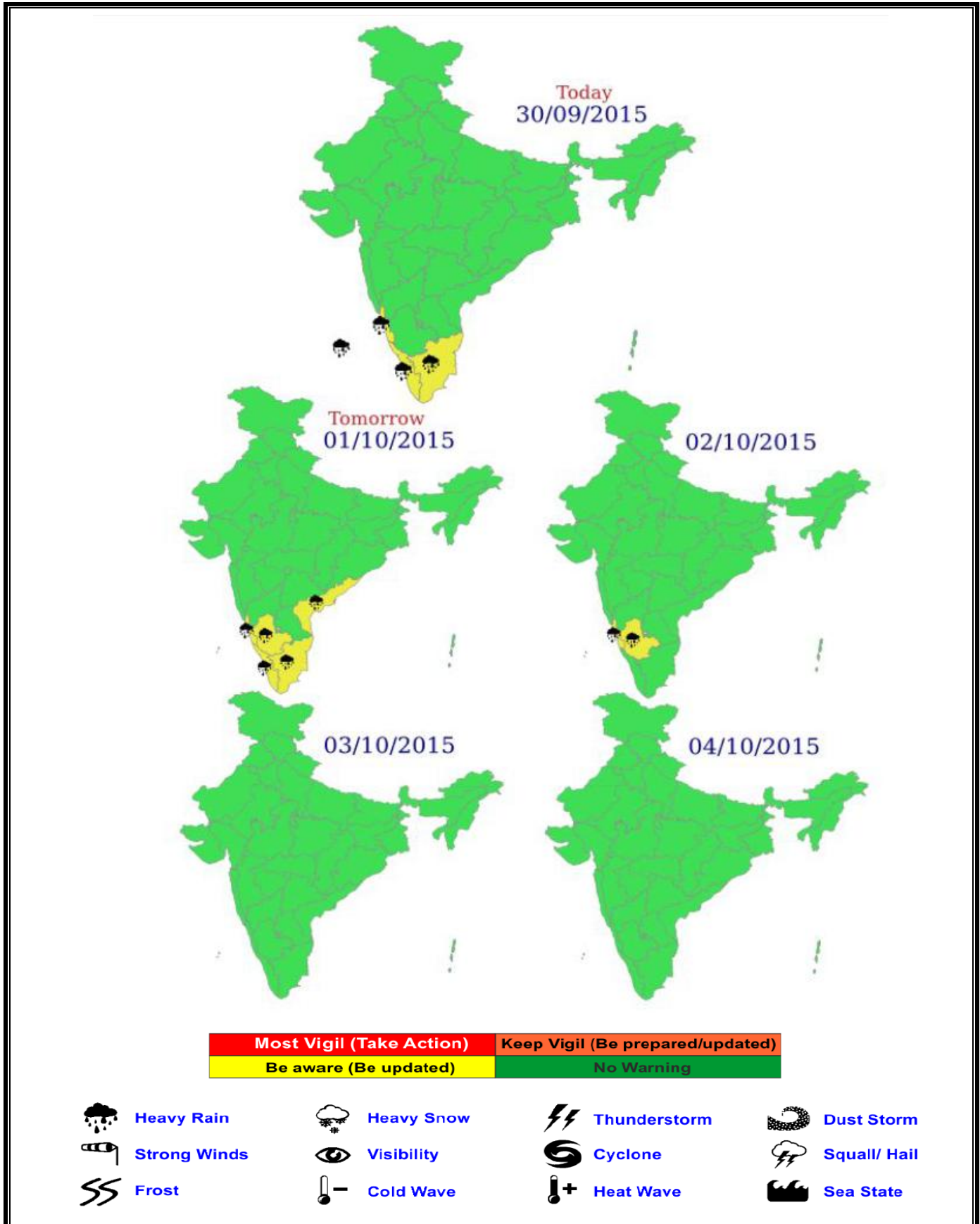


Fig-3 Warning



(Back)

Table-3

Significant amounts of rainfall (in cm)
(From 0830 hours IST of yesterday to 0830 hours IST of today)
30 September 2015

ANDAMAN & NICOBAR ISLANDS:		KHANAPUR	1	POLLACHI	4
HUT BAY	5	BHUVANAGIRI	1	VALPARAI PTO	4
MAYA BANDAR	3	CHENNARAOPET	1	RAMANATHAPURAM	4
CAR NICOBAR	1	VENKATAPURAM	1	ERANIEL	4
NAGALAND, MANIPUR, MIZORAM & TRIPURA:		NARSAMPET	1	KODAIKANAL	3
CHHUARLLUNG(ARG)	3	KOIDA	1	MANAMADURAI	3
SERCHIP	2	ALAMPUR	1	THALAVADI	3
AIZWAL	1	RAYALASEEMA:		METTUPALAYAM	3
ODISHA:		NANDEVARAM	3	ADIRAMPATNAM	3
MALKANGIRI	1	SATYAVEDU	2	PATTUKOTTAI	3
COASTAL ANDHRA PRADESH:		SRISAILAM	1	KETTI	3
PIDUGURALLA	3	PUNGANUR	1	SATTUR	3
KAIKALUR	3	TIRUPATI(A)	1	NADUVATTAM	3
GUDIVADA	3	ATMAKUR	1	CHEYYUR	3
PEDDAPURAM(A)	3	KURNOOL	1	PERAIYUR	3
GARUGUBILLI	2	TAMILNADU & PUDUCHERRY:		PERIYANAICKENPALAYAM	3
NELLORE	2	SATHYAMANGALAM	12	KALUGUMALAI	3
NUZVID	2	PAMBAN	11	ARANMANAIPUDUR	3
AMALAPURAM	2	BHAVANISAGAR	9	ARUPPUKOTTAI	3
PALAKODERU	2	NANGUNERI	8	RAYAKOTTAH	3
KAKINADA	2	MUTHUPET	8	HOGENEKAL	2
MARUTERU(A)	1	TONDI	7	PERIYAR	2
AMBAJIPETA(ARG)	1	AIRPORT MADURAI	7	SIVAGANGA	2
BHEEMAVARAM	1	BODINAICKANUR	7	K BRIDGE	2
CHODAVARAM	1	THATHIENGRPET	7	CHENGAM	2
JANGAMESHWARAPURAM(ARG)	1	CHITTAMPATTI	6	SRIVILLIPUTHUR	2
JANGAMAHESWARAPURAM	1	SIVAKASI	6	TIRUPPUR	2
MASULIPATNAM CDR	1	DHARAPURAM	6	ANNUR	2
TANUKU	1	KAMUDHI	6	TIRUCHENGODE	2
NANDIGAMA	1	PECHIPARAI	6	CHENGALPATTU	2
TELANGANA:		SULUR	6	AP PEELAMEDU	2
PALAKURTHI	5	MANGALAPURAM	5	GUDALUR	2
MAHABUBABAD	3	UDUMALPET	5	PUDUKOTTAI	2
PINAPAKA	3	ILLAYANGUDI	5	UTHAGAMANDALAM AWS	2
DUMMUGUDEM	3	BODINAYAKANUR ARG	5	PARAMAKUDI	2
KOTHAGUDEM	3	NATHAM	5	COIMBATORE SOUTH	2
ZAFFERGADH	2	COONOR PTO	4	TIRUPUVANAM	2
ASWAPURAM	2	NAGERCOIL	4	UTHAGAMANDALAM	2
JANGAON	2	RAMESWARAM	4	KOTHAGIRI	2
BAYYARAM	1	R.S.MANGALAM	4	TIRUMANGALAM	2
		VALPARAI TALUK OFFICE	4	POONAMALLEE	2
		PAPANASAM	4	KUMARAPALAYAM	2
		COONOR	4	UTTAMAPALAYAM	2
		KARUR	4	K.PARAMATHI	2
				MAYANUR	2
				CHINNAKALAR	2

PERUNGALUR	1	INDI	2	OTTAPALAM	3
METTUPATTI	1	BIDAR PTO	1	KAYAMKULAM AGRI	3
VAZHAPADI	1	BIDAR	1	VARKALA	3
THIRUCHUZH	1	MUNIRABAD ARG	1	MANJERI	3
AVINASI	1	KALABURGI AWS	1	ERNAKULAM SOUTH	3
PERIYAKULAM AWS	1			IDUKKI	3
COLACHEL	1	SOUTH INTERIOR KARNATAKA:		HOSDURG	3
USILAMPATTI	1	M M HILLS	9	NEYATTINKARA	2
VIRUDHUNAGAR	1	NAGAMANGALA	6	KUMARAKAM	2
SATANKULAM	1	CHANNAPATNA	3	ANGADIPURAM	2
KARAIKUDI	1	KUSHALNAGAR	3	CHALAKUDI	2
PERAMBALUR	1	VIRAJPET	3	KAYAMKULAM	2
DEVALA	1	MADAPURA	3	KONNI	2
MADURAI SOUTH	1	BELLUR	3	MYLADUMPARA AGRI	2
THIRUTHURAIPOONDI	1	BHAGAMANDALA	3	KODUNGALLUR	2
MELUR	1	KRISHNARAJPET	2	PATTEMBI	2
WATRAP	1	BEGUR	2	KOLLAM RLY	2
CHATRAPATTI (ODANCHATRA)	1	SOMWARPET	2	MATTANUR	2
MARANDAHALLI	1	HUNSUR	1	PONNANI	2
TUTICORIN	1	ARKALGUD	1	AMBALAVAYAL	2
PALANI	1	HALLI MYSORE	1	HARIPAD	2
RADHAPURAM	1	KORATAGERE	1	VAIKOM	2
BHOOTHAPANDY	1	MADIKERI PTO	1	KUDULU	2
ATTUR	1	MUDIGERE	1	KANJIRAPPALLY	1
SHOLAVANDAN	1			VADAKKANCHERRY	1
NILAKOTTAI	1	KERALA:		NEDUMANGAD	1
MUDUKULATUR	1	CHITTUR	10	KUNNAMKULAM	1
KOVILANKULAM	1	TALIPARAMBA	10	KOTTAYAM	1
DEVAKOTTAI	1	PERUMPAVUR	9	THRITLA	1
THURAIYUR	1	IRINJALAKUDA	9	ALWAYE PWD	1
COIMBATORE AWS	1	THODUPUZHA	8	MANNARKKAD	1
NEEDAMANGALAM	1	CHERTHALA	7	CHENGANNUR	1
RAJAPALAYAM	1	ALATHUR	7	ENAMAKKAL	1
SENDAMANGALAM	1	PIRAVAM	7		
NAMAKKAL	1	KOLLAMKODE	6	LAKSHADWEEP:	
SALEM	1	KOZHA	6	MINICOY	2
		CHERUTHAZHAM	5	AGATHI	1
COASTAL KARNATAKA:		IRIKKUR	5		
SULYA	4	KOCHI C.I.A.L.	4		
BANTWAL	2	MUNNAR KSEB	4		
MANI	1	PEERMADE TO	3		
KADRA	1	MAVELIKARA	3		
KARKALA	1	ALAPUZHA	3		
		KANNUR	3		
NORTH INTERIOR KARNATAKA:		KOCHI I.A.F.	3		
YEDRAMI	2	VELLANIKKARA	3		
JEWARGI	2	KURUDAMANNIL	3		

LEGEND		
(A) / AWS--Automated Weather Station	IMD--India Meteorological Department	FMO--Flood Met. Office
ARG--Automated Rain-Gauge	PWD--Public Welfare Department	PBO--Pilot Balloon Observatory
SR--State Raingauge	PT / PTO--Part Time Observatory	REV--Revenue
AP--Airport	CDR--Cyclone Detection Radar	
IAF--Indian Air Force	CWC--Central Water Commission	