



U.S. AIR FORCE



AFWA Ensemble Products & Training



Mr. Horner
Chief, Scientific Services
A3N

U.S. AIR FORCE

Approved for Public Release – Distribution Unlimited

Aim High...Fly, Fight, Win



U.S. AIR FORCE

Purpose



- **Highlight examples of ensemble products and ensemble training materials available from the Air Force Weather Agency (AFWA)**



U.S. AIR FORCE

Overview



- **Current Operational Status**
- **Products**
- **Performance**
- **Training Materials**
- **Way-Ahead**

Aim High...Fly, Fight, Win



Current Operational Status



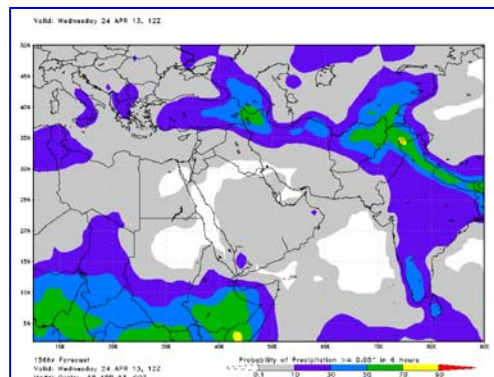
U.S. AIR FORCE

- AFWA Declared Ensembles Operational in 2012
- Air Force Weather Ensemble Prediction Suite (AFWEPS)
 - Global Ensemble Prediction Suite (GEPS)
 - Mesoscale Ensemble Prediction Suite (MEPS)

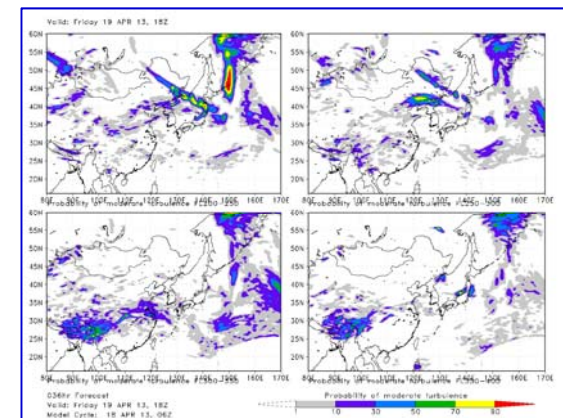
Available Products

- Point Ensemble Probabilities
- Potential Error Plots
- Probability Plots
- Precipitation Plots
- Meteograms
- Stamp Charts
- Severe Plots

MEPS 4-Panel Turb Probabilities



GEPS Precip Probability





U.S. AIR FORCE

Current Operational Status

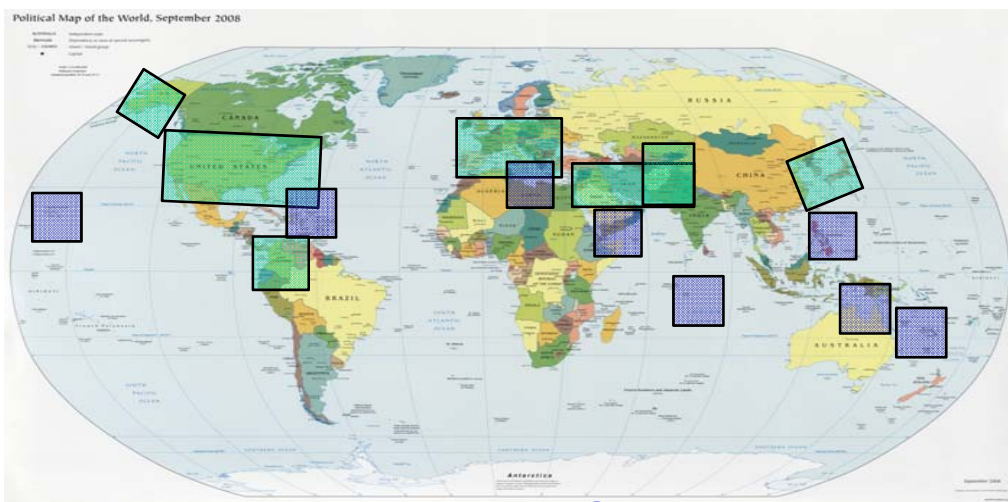


- **Global Ensemble Prediction Suite (GEPS)**
 - Combination of GFS, GEM, and NOGAPS ensembles
 - Post-processed at AFWA (62 total members)
 - 1° resolution; 240 hour forecast
 - 00/12Z cycles daily (available t+10 hours)
- **Mesoscale Ensemble Prediction Suite (MEPS)**
 - 10 members of WRF-ARW with diverse physics configurations and initial conditions
 - Initial conditions are deterministic UM, GFS, and GEM
 - 20 km hemispheric and tropical stripe domains to 144 hours run at 06Z/18Z with inline dust module
 - 4 km domains once per day to 72 or 84 hours

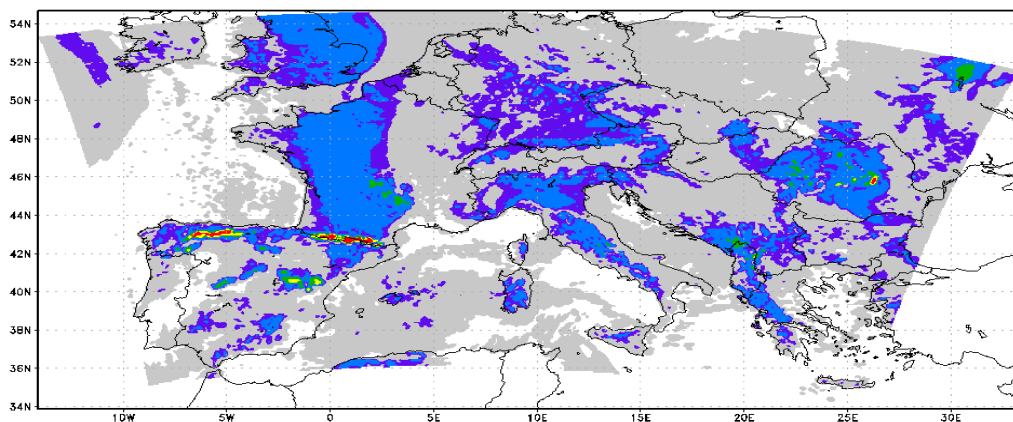


U.S. AIR FORCE

MEPS



4km MEPS Windows



4 km MEPS visibility product

- **4km MEPS Domains**
 - **Green – static fixed windows**
 - **Blue – relocatable windows**
 - **JTWC uses to track tropical storms**
 - **Air Force Weather's Operational Weather Squadrons coordinate window movements to address a variety of natural and manmade contingencies**

Aim High...Fly, Fight, Win



U.S. AIR FORCE

MEPS



■ Physics Configurations

Mem	Atmos IC/LBC	Land IC	Snow/SST IC	LU	Surface	LEVS	LEV2	SW-Rad	LW-Rad	PBL	DSR	Microphysics	Hail	CCN	Cumulus (20 km only)
1	UM	LIS	UM	USGS	NOAH	27	0.990	Dudhia	RRTM	ACM2	GNX	WDM6	1	5E+08	BMJ
2	GFS	LIS	GFS	USGS	USGS	27	0.995	Dudhia	RRTM	BouLac	DRI	Morrison	1	1E+08	Tiedtke
3	GEM	LIS	GEM	USGS	NOAH	24	0.990	Goddard	Goddard	YSU	GNX	WDM6	0	1E+09	New SAS
4	GEM	UM	GEM	USGS	NOAH	21	0.995	Goddard	Goddard	BouLac	DRI	Morrison	1	1E+09	BMJ
5	UM	UM	UM	USGS	NOAH	21	0.985	CAM	CAM	YSU	GNX	Thompson	N/A	N/A	Tiedtke
6	GFS	LIS	GFS	USGS	PX	24	0.990	Dudhia	RRTM	ACM2	DRI	WDM6	1	1E+08	Tiedtke
7	GEM	UM	GEM	USGS	PX	24	0.985	Dudhia	RRTM	BouLac	GNX	Thompson	N/A	N/A	New SAS
8	GFS	LIS	GFS	USGS	PX	24	0.995	CAM	CAM	ACM2	DRI	Morrison	0	1E+08	BMJ
9	UM	UM	UM	USGS	PX	27	0.985	CAM	CAM	YSU	GNX	WDM6	0	5E+08	BMJ
10	GFS	UM	GFS	USGS	PX	21	0.990	Goddard	Goddard	ACM2	DRI	Thompson	N/A	N/A	New SAS

- No data assimilation, most recently available global model output is interpolated to the domain
- 21-27 vertical levels—does not seem to degrade quality, saves on cost (Aligo et. al. 2008)

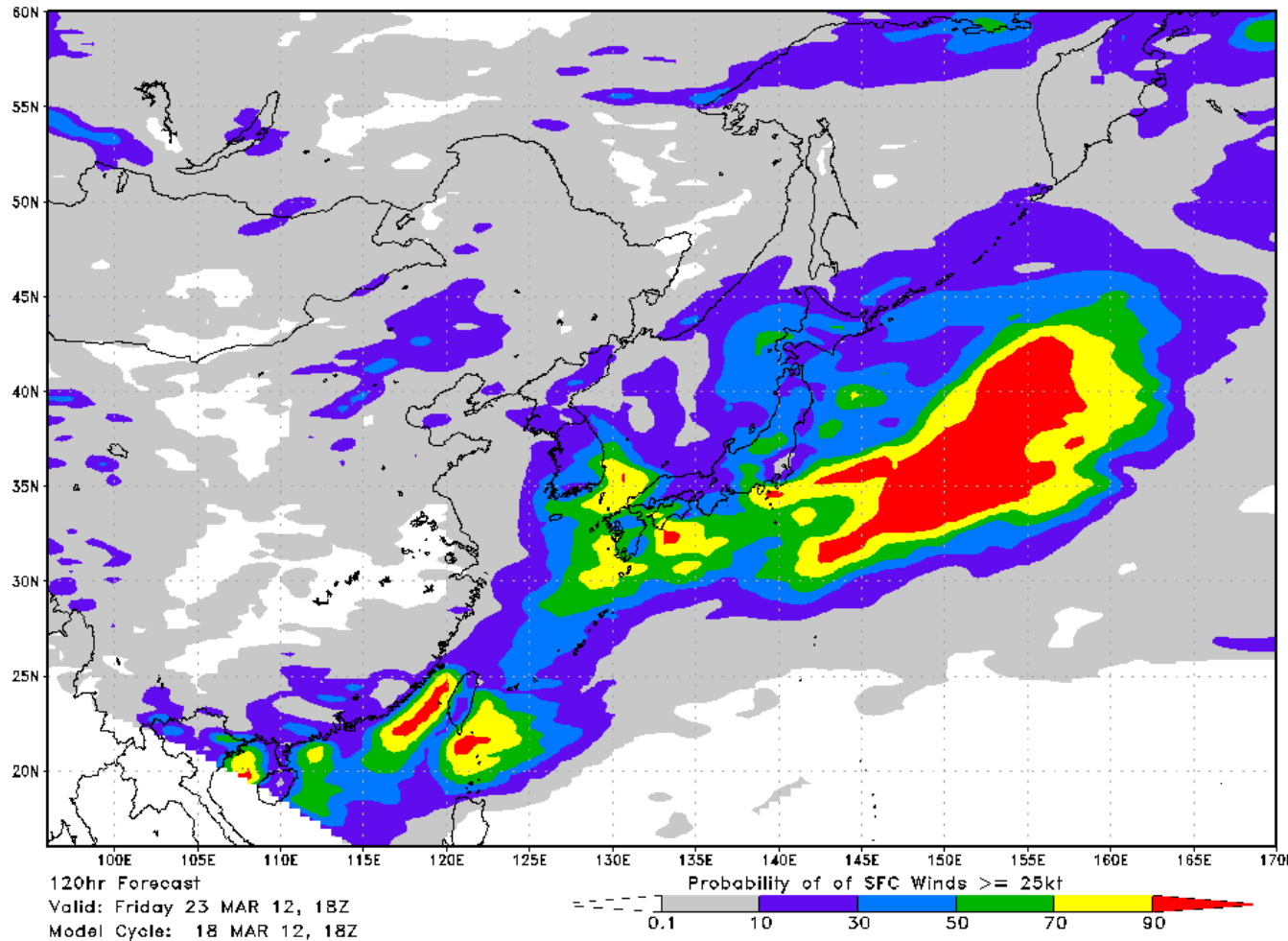


U.S. AIR FORCE

Probability Plots



Valid: Friday 23 MAR 12, 18Z



- Ensemble member outputs are combined to create probabilities by counting how many members are above and below the threshold of significance (e.g., surface winds \geq 25 kts).
- Probabilities can be used both to improve deterministic forecasts and also to alert decision makers to the level of weather risk depending on their sensitivity to various types of weather.

Aim High...Fly, Fight, Win

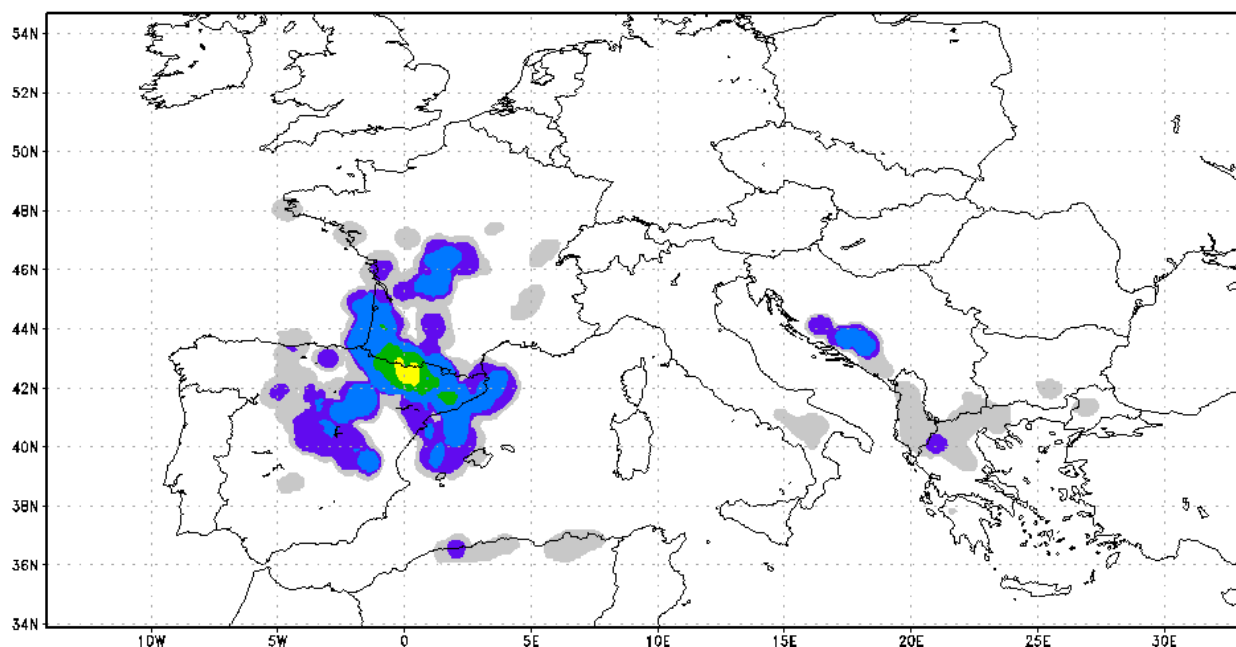


U.S. AIR FORCE

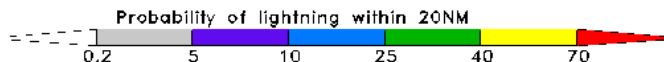
Convection-Allowing



Valid: Wednesday 21 MAR 12, 15Z



051hr Forecast
Valid: Wednesday 21 MAR 12, 15Z
Model Cycle: 19 MAR 12, 12Z



- 4 km domains are convection-allowing, meaning updrafts and downdrafts are explicitly predicted rather than parameterized.
- This allows for more precise prediction of convective impacts from lightning, wind, hail, tornadoes, and precipitation.
- However, owing to the complex nature of convection, convective features generated in 4 km domains may be spurious even though they “look” realistic.

Aim High...Fly, Fight, Win

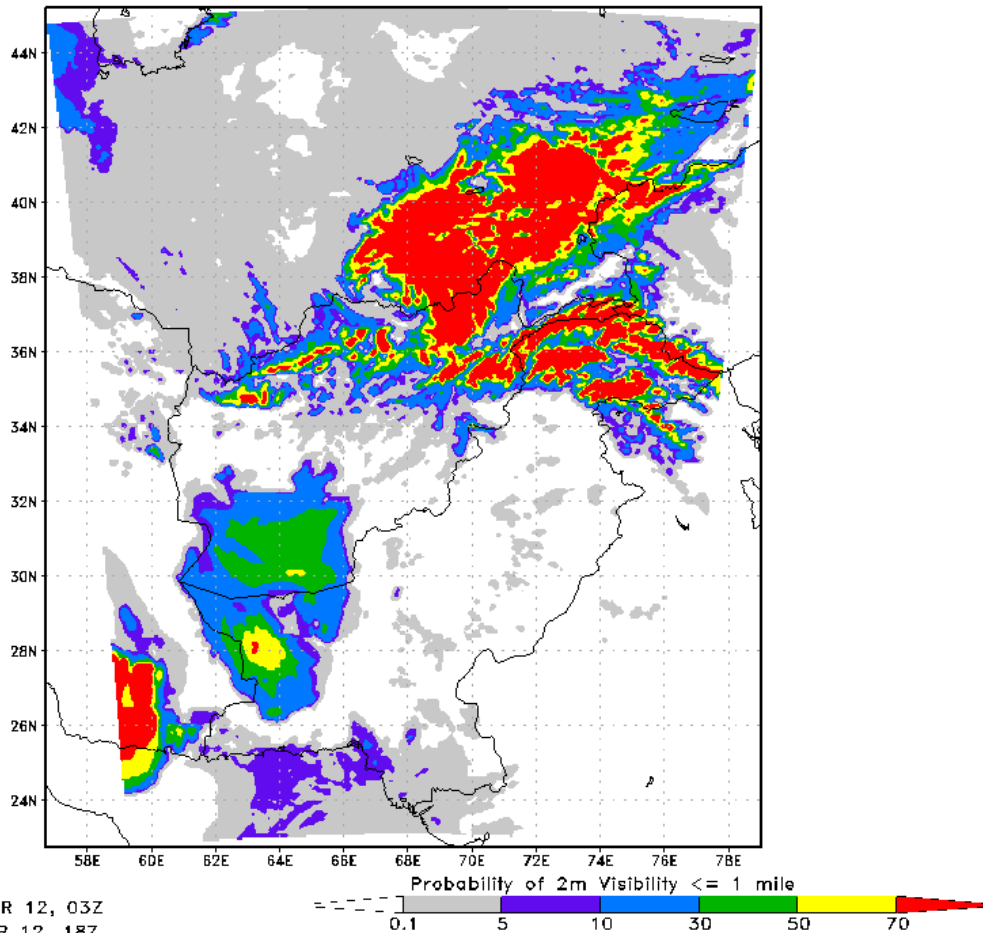


U.S. AIR FORCE

Inline Dust



Valid: Monday 19 MAR 12, 03Z



- In certain domains, dust is lofted and advected as part of the model (WRF-Chem) to improve dust forecasts.
- In the visibility restriction product shown here, snow/precipitation related restrictions are present in the north with dust related restrictions in the south.

Aim High...Fly, Fight, Win

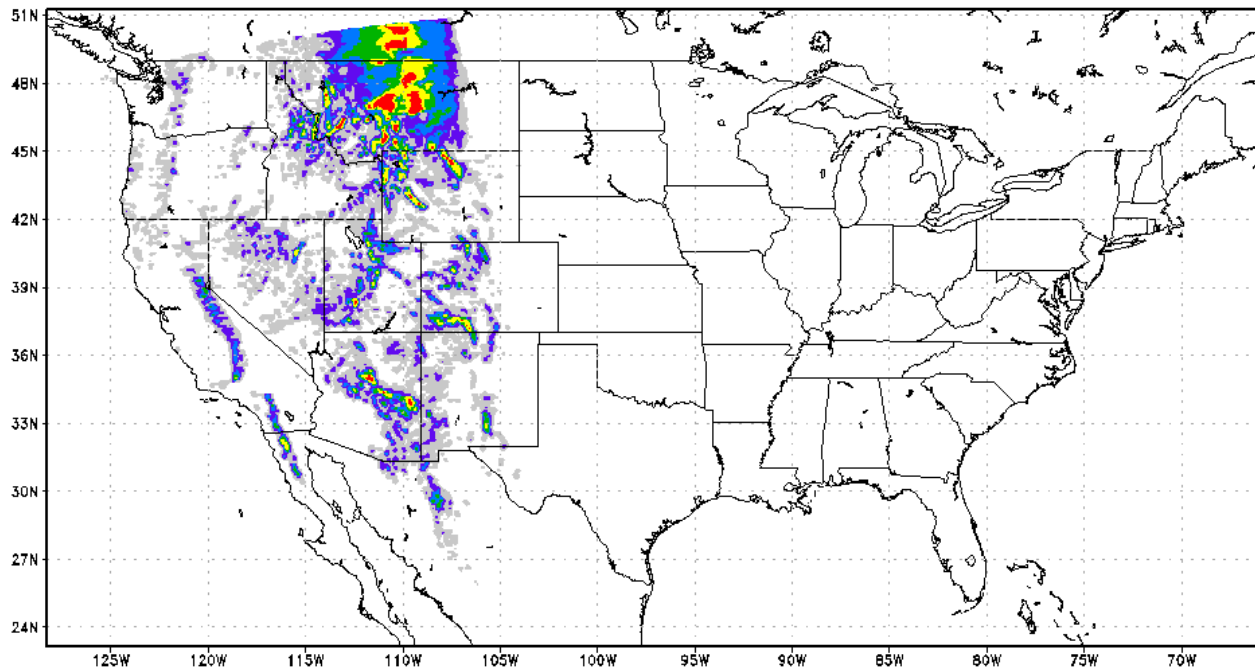


Precipitation Accumulation

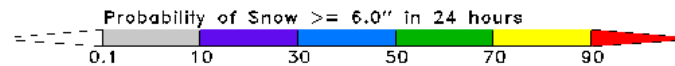


U.S. AIR FORCE

Valid: Tuesday 20 MAR 12, 00Z



024hr Forecast
Valid: Tuesday 20 MAR 12, 00Z
Model Cycle: 19 MAR 12, 00Z



- Probabilities of precipitation for different amounts and time periods.
- Standard warning criteria (e.g., 2 inches of rain or snow in 12 hours) plus many others (e.g., 6 or more inches of snow in 24 hours).

Aim High...Fly, Fight, Win

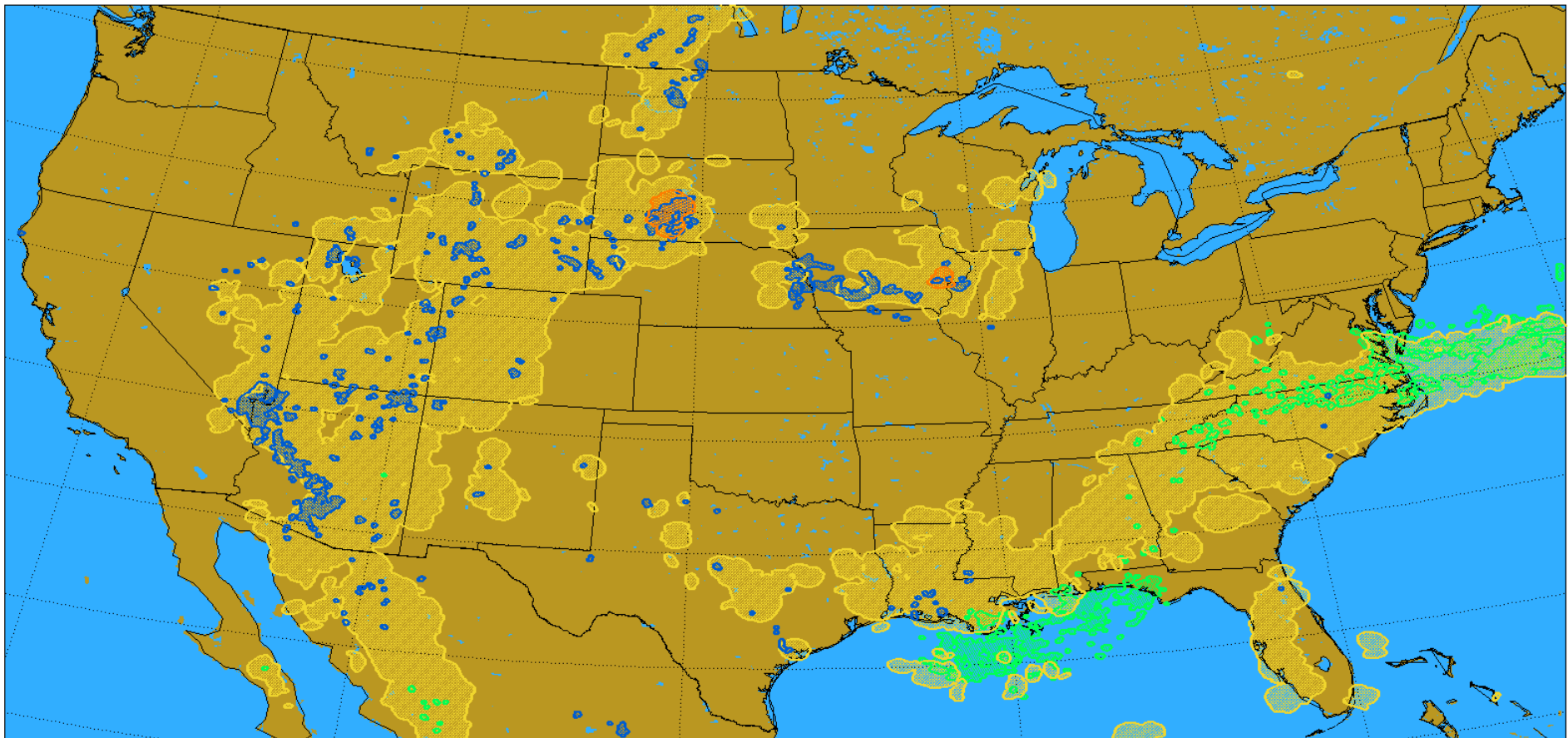


U.S. AIR FORCE

Summary Charts



JF3MSP Quick Look Weather Threat Probability Run: 2012072000 valid: 048 hrs at: 2012072200



● P(RA gt 2 inch/12 hrs) >20% ● P(SN gt 2 inch/12 hrs) >20% ● P(FZRN gt 0.01 inch) >20%
● P(Tornado in 20 NM) >5% ● P(Hail gt 1 inch in 20 NM) >10% ● P(Gust gt 50 knots) >10% ● P(LGT in 20 NM) >20%

- Hourly chart from the 4 km MEPS showing multiple weather threats on one map.

Aim High...Fly, Fight, Win

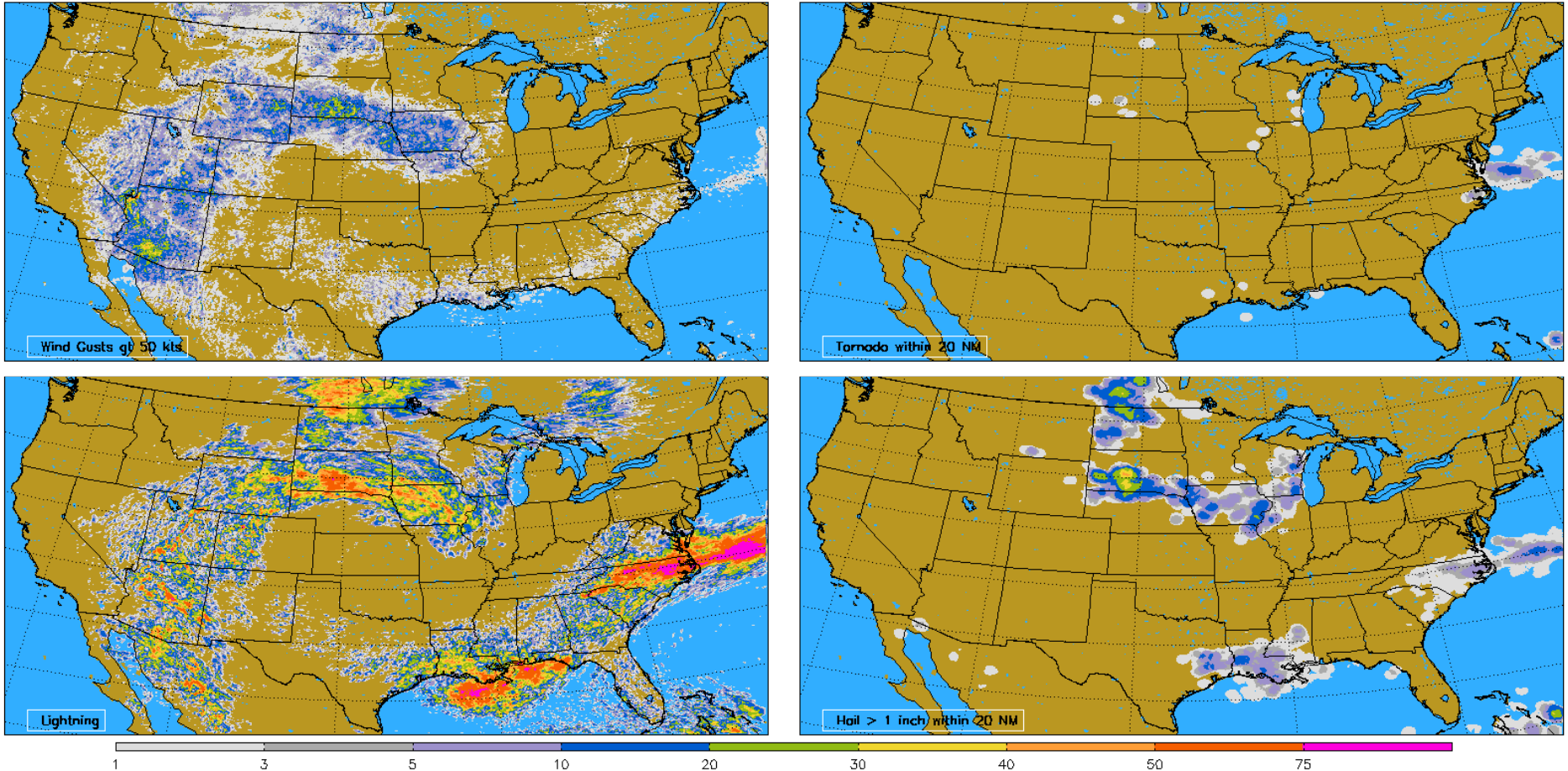


U.S. AIR FORCE

Summary Charts



Severe Probabilities for the 36-60 hour period after 2012072000



- Summaries to help discern where severe threats will be located in a given 24-hour period.

Aim High...Fly, Fight, Win

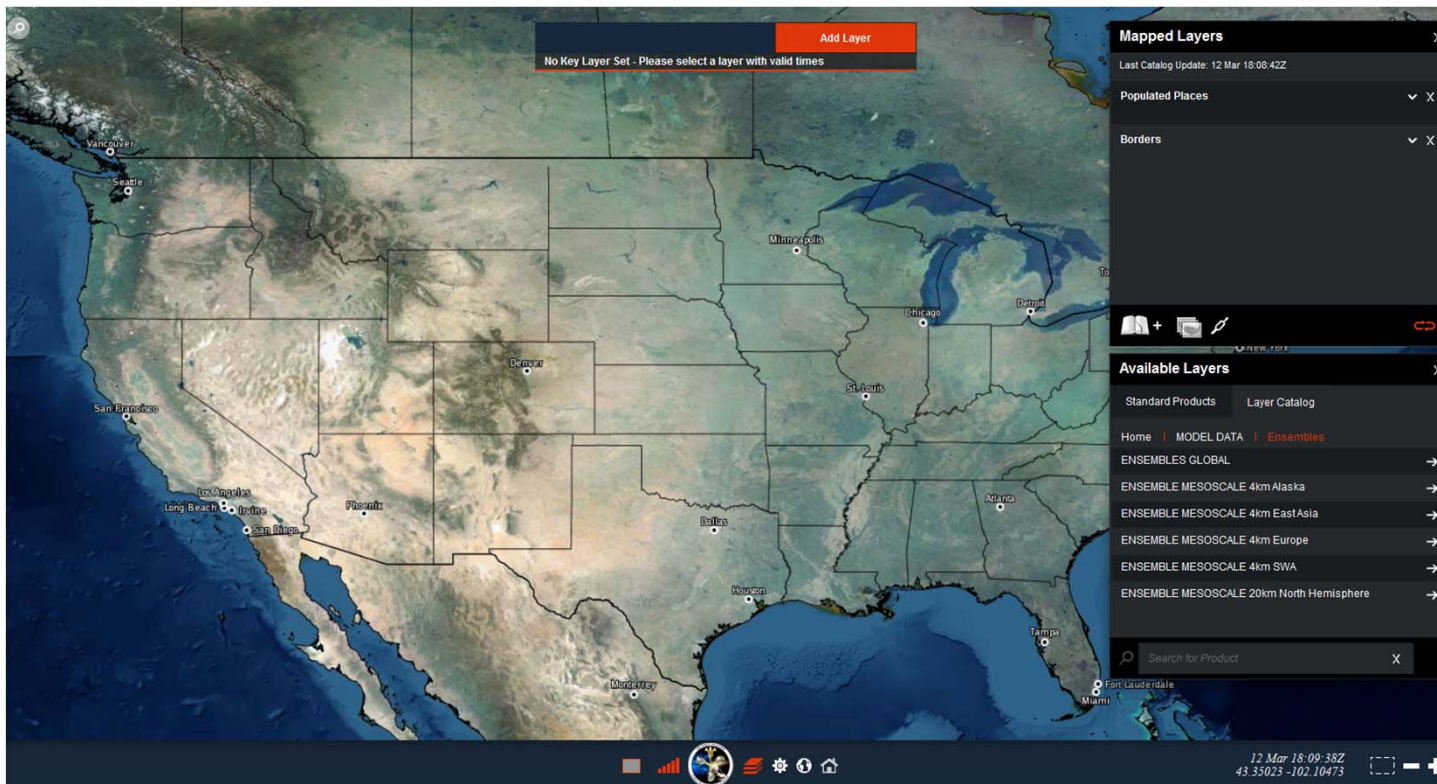


U.S. AIR FORCE

Output



- **GEPS and MEPS products are available on AFW-WEBS:**
https://weather.af.mil/AFW_WEBS/viewer/MapModule.php



Select "Layer Catalog → Model Data → Ensembles" in the menu on the bottom right.

Aim High...Fly, Fight, Win



Output

<https://weather.af.mil/confluence/display/AFWWEBSTBT/Ensembles+Main+Page>



U.S. AIR FORCE

Dashboard > AFWWEBS Classic > ... > Welcome to AFWEPS - AFW Ensemble Prediction Suite



Welcome to AFWEPS - AFW Ensemble Prediction Suite

Products | PEP Bulletins | Info | Contact

Point Ensemble Probability Bulletins

Select a model **GEPS** 20km MEPS 4km MEPS

Enter an ICAO

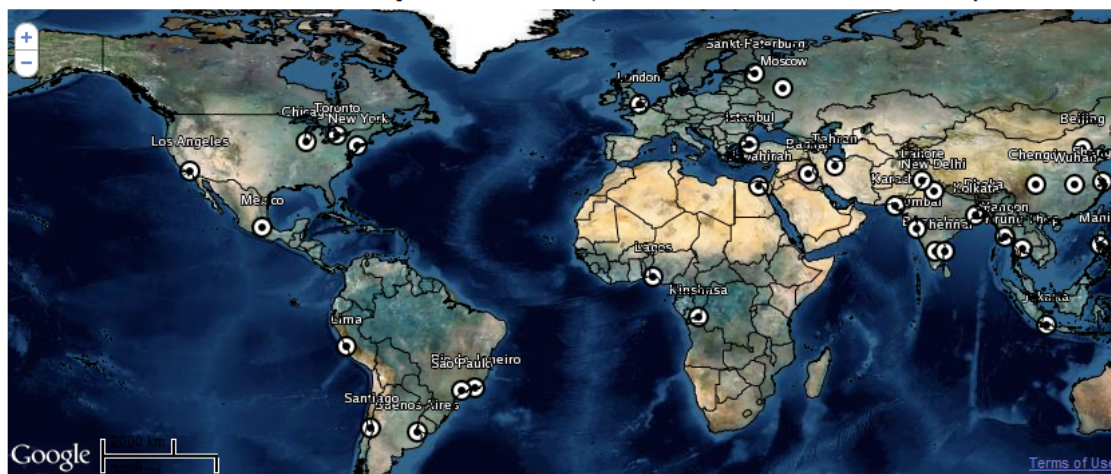


Submit



Find an ICAO

Select a model above then enter a latitude and longitude, or click on the map to find the closest ICAO. Click "Submit" to see your PEP bulletin.



Click to zoom to 4km MEPS domains

- CONUS
- SWA
- Pakistan
- Somalia
- East Asia
- Alaska
- Colombia
- Europe
- Floater

Reset map

Latitude:

Longitude:

Search

For PEP bulletins, use map or enter ICAO. Note: only stations with ICAO are created.



Output

<https://weather.af.mil/confluence/display/AFWWEBSTBT/Ensembles+Main+Page>



U.S. AIR FORCE

Dashboard > AFWWEBS Classic > ... > Welcome to AFWEPS - AFW Ensemble Prediction Suite



Welcome to AFWEPS - AFW Ensemble Prediction Suite

Products PEP Bulletins Info Contact

1. Select a Model

- GEPS
- 20km MEPS
- 4km MEPS**

2. Select a region

- CONUS**
- SWA
- East Asia
- Europe
- Alaska
- Afghanistan
- Colombia
- Somalia
- Global Floater 1

3. Select a product suite

- Probability Plots
- Precipitation Plots
- Severe Plots**
- Stamp Charts

4. Select a Product

4km MEPS - CONUS Severe Weather Plots	Loop	Single Forecast Hour
Threat Summary	<input type="radio"/>	Please select one
12-36 Hour Severe Weather Outlook	<input type="radio"/>	Please select one
36-60 Hour Severe Weather Outlook	<input type="radio"/>	Please select one
Max Hourly Surface Wind Velocity and 50kt Wind Probability	<input type="radio"/>	Please select one
Max Hourly Updraft Velocity and 1.0in Hail Prob within 20NM	<input type="radio"/>	Please select one
Max Hourly 2-5km AGL Updraft Helicity and Tornado Prob w/in 20NM	<input type="radio"/>	Please select one
Vertically Integrated Cloud Ice and Lightning Prob w/in 20NM	<input type="radio"/>	Please select one
Severe Ingredients 4-Panel	<input type="radio"/>	Please select one
Maximum Potential Icing Threat	<input type="radio"/>	Please select one
Surface Wind >= 50 KTS	<input type="radio"/>	Please select one
Surface Wind >= 65 KTS	<input type="radio"/>	Please select one
Probability of Precipitable Water > 25 mm	<input type="radio"/>	Please select one
Probability of Precipitable Water > 50 mm	<input type="radio"/>	Please select one
Probability of Lightning within 4km	<input type="radio"/>	Please select one
Probability of Lightning within 10NM	<input type="radio"/>	Please select one
Probability of Lightning within 20NM	<input type="radio"/>	Please select one
Probability of Hail >= 1.0in within 4km	<input type="radio"/>	Please select one
Probability of Hail >= 1.0in within 10NM	<input type="radio"/>	Please select one
Probability of Hail >= 1.0in within 20NM	<input type="radio"/>	Please select one
Probability of Hail >= 2.0in within 4km	<input type="radio"/>	Please select one

User can navigate between model, region, and product suite for output of choice.

Aim High...Fly, Fight, Win

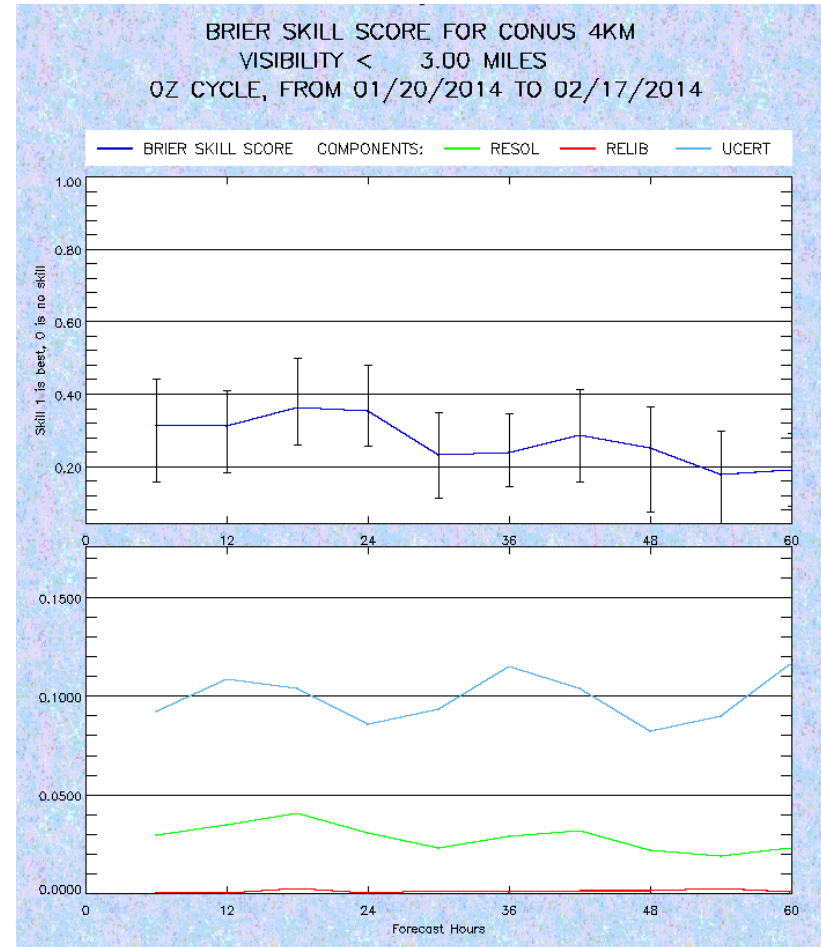
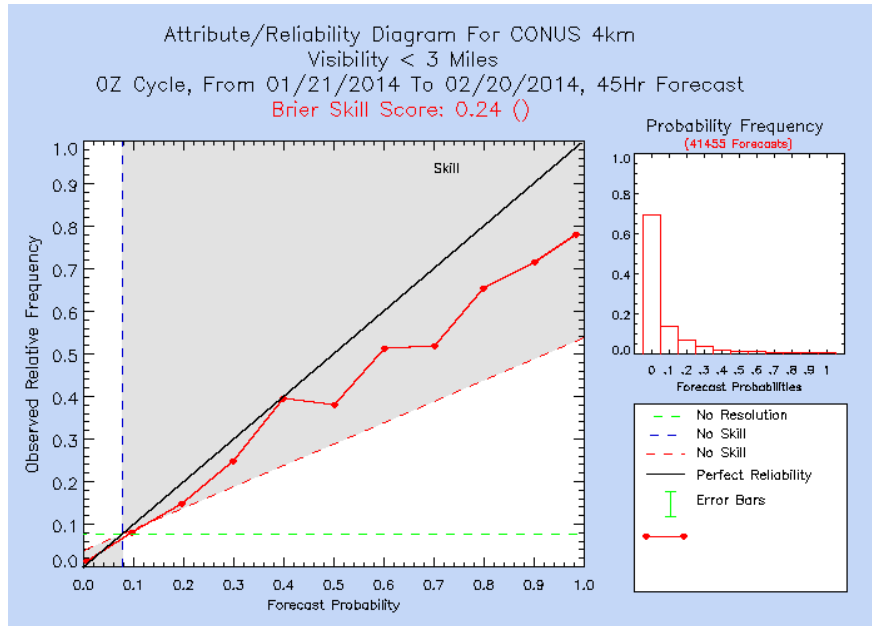


Statistical Verification

<https://weather.af.mil/confluence/display/AFWEBSTBT/Model+Verification+Main+Page>



U.S. AIR FORCE



Aim High...Fly, Fight, Win

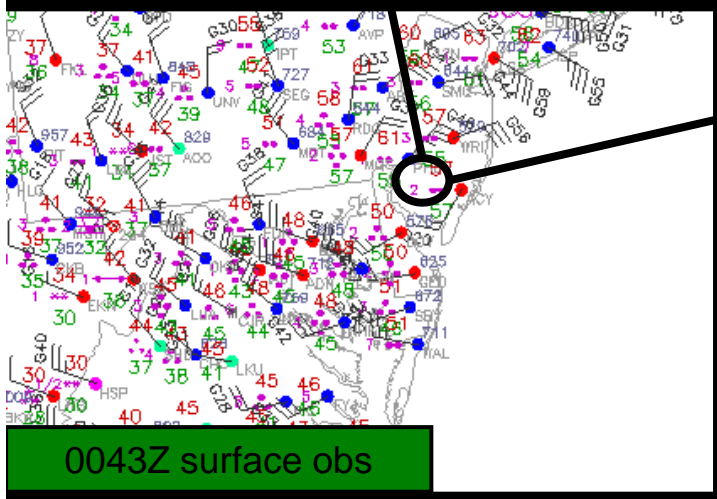
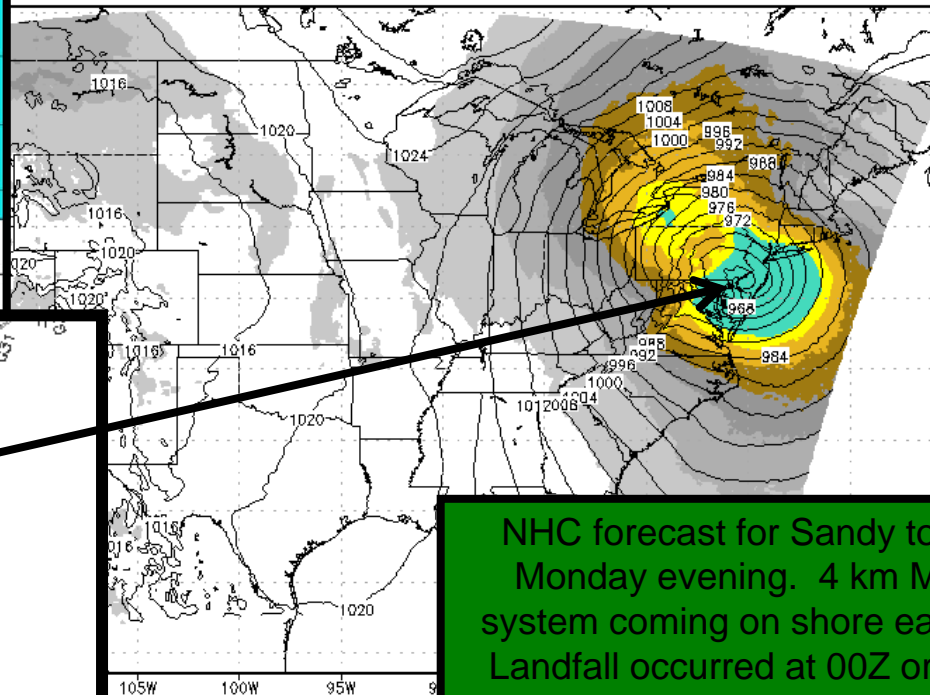
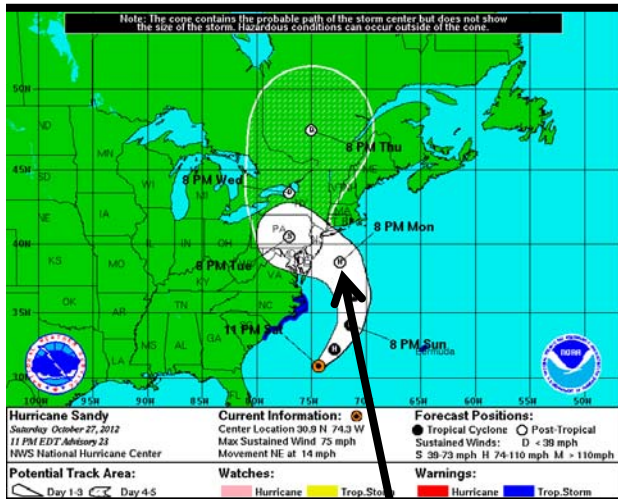


4 km MEPS 60-hour forecast

Landfall valid at 00Z 30 Oct 2012



U.S. AIR FORCE



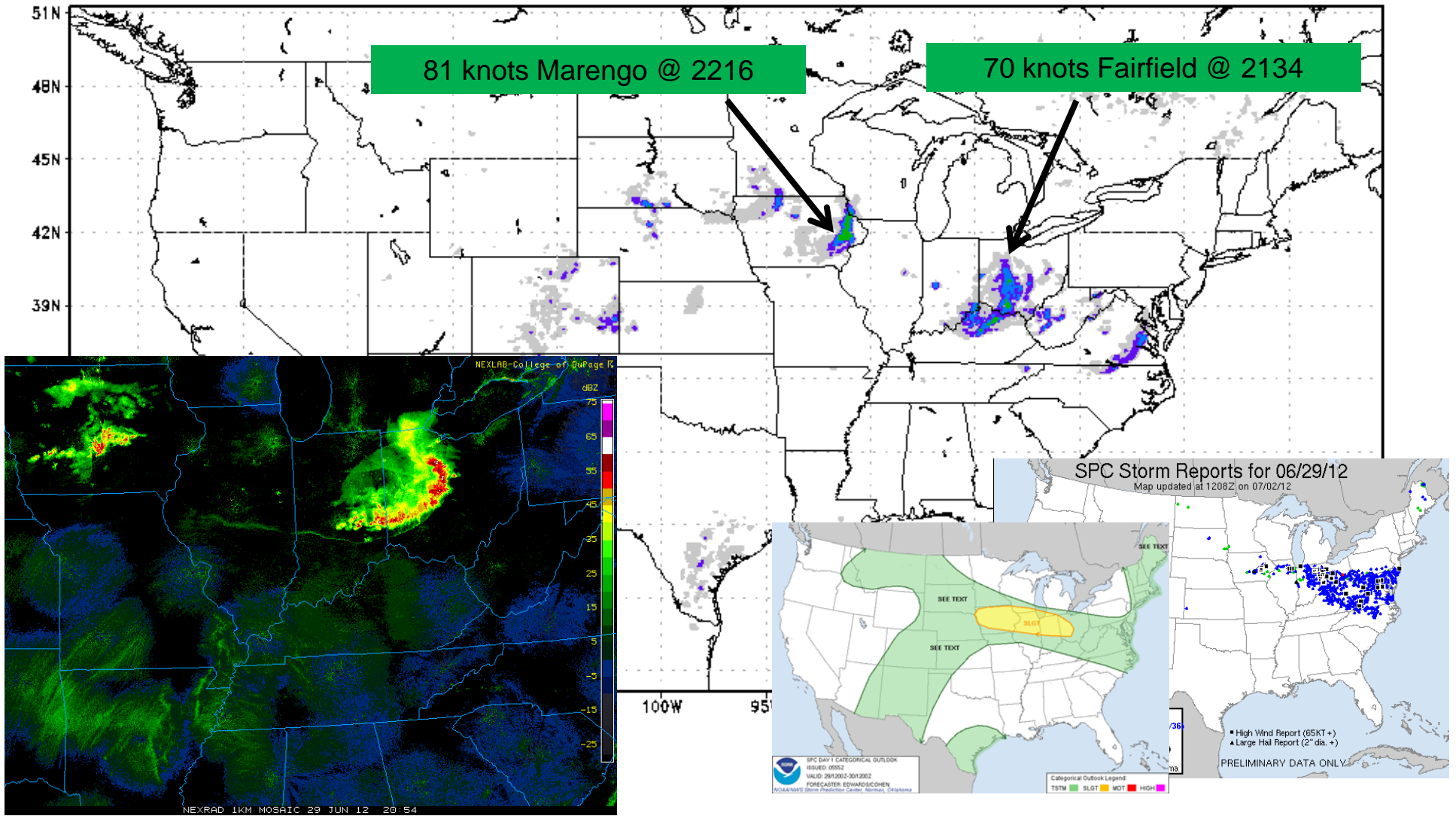
NHC forecast for Sandy to still be offshore on Monday evening. 4 km MEPS mean shows system coming on shore early Monday evening. Landfall occurred at 00Z or 8:00 PM local time.

0000Z Forecast
 Valid: Tuesday 30 OCT 12, 00Z
 Model Cycle: 27 OCT 12, 12Z

Aim High...Fly, Fight, Win

Valid: Friday 29 JUN 12, 21Z

4 km MEPS 21-hour forecast



021hr Forecast
Valid: Friday 29 JUN 12, 21Z
Model Cycle: 29 JUN 12, 00Z



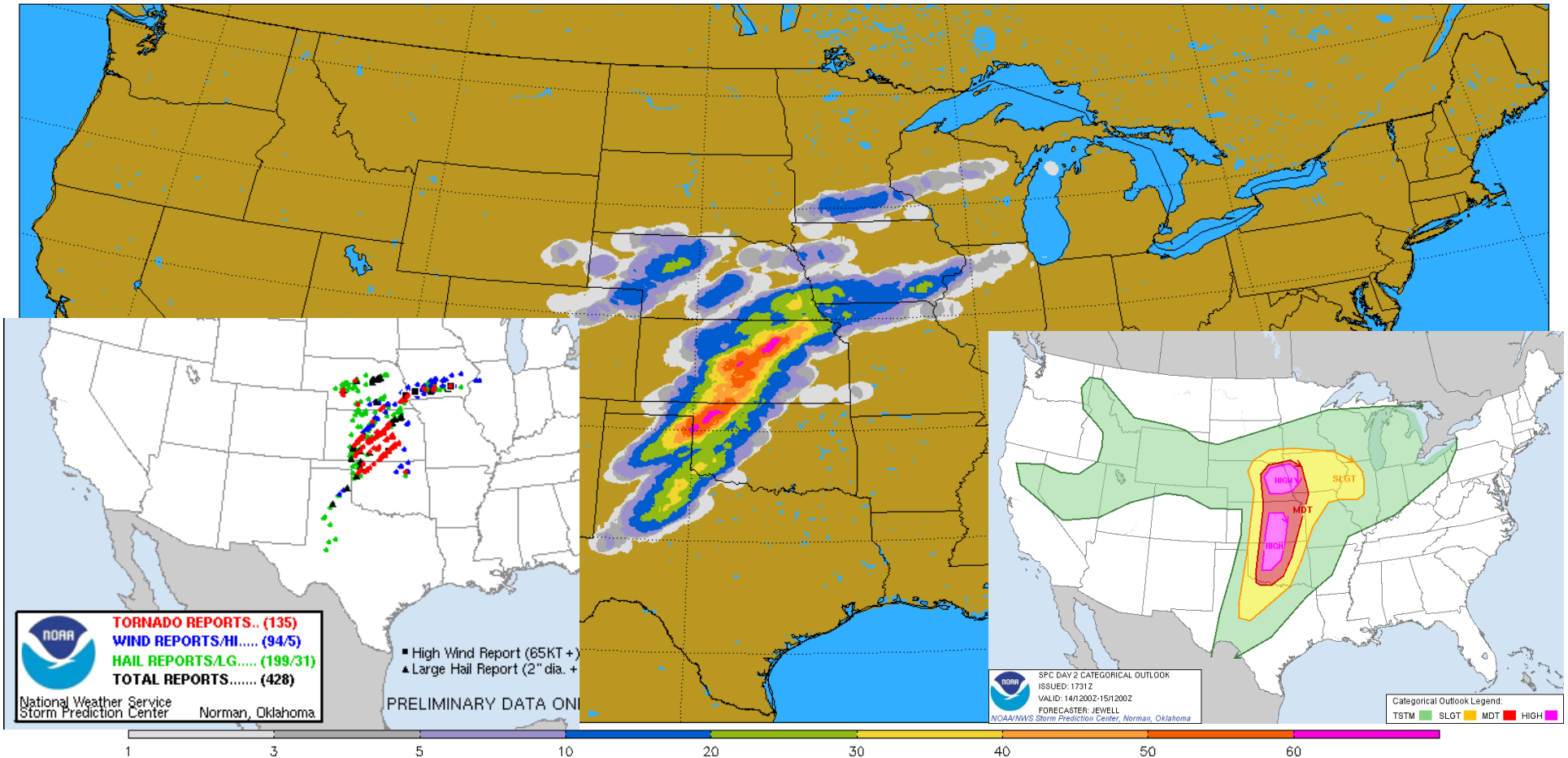
U.S. AIR FORCE

13 Apr 00Z 4km MEPS

24-hour tornado probability valid 12Z 14 Apr - 12Z 15 Apr



Tornado probability estimate within 20 NM for 14 Apr 12Z to 15 Apr 12Z



Aim High...Fly, Fight, Win



U.S. AIR FORCE

AFWEPS Information



- Detailed AFWEPS information is also available on AFW-WEBS Confluence:
 - <https://weather.af.mil/confluence/pages/viewpage.action?pageId=11766859>
- For additional AFWEPS information, the AFWA POC is Mr. Evan Kuchera
 - DSN: 271-3724, COMM: (402) 294-3724
 - E-mail: evan.kuchera@offutt.af.mil



U.S. AIR FORCE

Training Materials



■ Available on the Air Force Weather Knowledge Center (AFWKC):

1. *AFW Transition to Stochastic Weather Prediction*
2. *AFWA Introduction to ORM in AFW*
3. *AFW Introduction to Ensemble Verification Techniques*
4. *COMET Introduction to Ensemble Prediction*
5. *COMET Ensemble Forecasting Explained*
6. *Glossary of Ensemble Forecasting Terms*
7. *WTS: Models – GEPS*
8. *WTS: Models – MEPS*
9. *Use/Misuse of Ensemble Stamp Charts*



U.S. AIR FORCE

Training Materials



■ Accessing the Air Force Weather Knowledge Center (AFWKC)

■ Go to:

https://afwkc.csd.disa.mil/kc/login/login.asp?kc_ident=kc0002



Aim High...Fly, Fight, Win



U.S. AIR FORCE

Way-Ahead



■ Policy

- AFW policy does not strongly sanction the use of ensembles
- Official policy documents may be revised (e.g., AFMAN 15-129, Volume 1, “Air and Space Weather Operations – Characterization”)
 - New verbiage will need to be coordinated/approved by the AFWA Staff and Air Staff

■ Operations

- Collect and report feedback from users
- Revise training material and policy as necessary based on user feedback



U.S. AIR FORCE

Way-Ahead



- **AFW-WEBS will enable users to manually select variables, thresholds, and time increments of choice**
 - Can tailor the probabilities to specific mission needs
 - For instance, probability of surface winds greater than 50 knots OR visibility less than 1 mile OR ceiling less than 1000 feet OR lightning for aircraft ops
 - Also, probability of 2 inches of snow in 3 hours, 12 hours, 53 hours, XX hours, etc.
- **Contingency 4 km MEPS domains**
 - Appointed user can request to change the area of the domain from cycle to cycle to meet mission or weather needs
- **Gridded data availability via subscription**
 - Test datasets available now by request to 16 WS/WXN
- **Develop multi-model regional ensembles (e.g., fold US Navy mesoscale model members into AFWA's MEPS)**

Aim High...Fly, Fight, Win