



## Special Daily Weather Report

25 August, 2016

### Monsoon Watch

- Meteorological sub-division wise spatial rainfall-distribution and monsoon activity during past 24 hours ending at 08:30 hours IST of today is enclosed. **(Table.1)**
- Latest Satellite Image of INSAT-3D is enclosed. **(Fig.1)**

### Seasonal Rainfall (in mm) from 1 June to 25 August, 2016

<u>Region</u>	<u>Actual</u>	<u>Normal</u>	<u>% Departure from Long Period Average</u>
All India	652.1	670.9	-3%
East & Northeast India	893.9	1081.1	-17%
Northwest India	495.3	470.2	5%
Central India	794.7	742.5	7%
South Peninsula	457.3	528.9	-14%

### Weather Forecast (valid upto 1430 hours IST of 30 August, 2016)

- Meteorological sub-divisionwise 5-day rainfall forecast is enclosed. **(Table-2)**
- Sub-division wise rainfall recorded upto 0830 hours IST of today is enclosed. **(Annexure-1)**

### Warning (Fig-2)

- 25 August (Day 1):**◆ Heavy rain at isolated places very likely over Odisha and north Coastal Andhra Pradesh.
- 26 August (Day 2 ):**◆ Heavy rain at isolated places very likely over Odisha, Coastal Andhra Pradesh and Andaman & Nicobar Islands.
- 27 August (Day 3 ):**◆ Heavy rain at isolated places very likely over Coastal Andhra Pradesh and Andaman & Nicobar Islands.
- 28 August (Day 4 ):**◆ Heavy rain at isolated places very likely over Telangana and Coastal Andhra Pradesh.
- 29 August (Day 5 ):**◆ Heavy rain at isolated places very likely over Sub-Himalayan West Bengal & Sikkim.

### Weather Outlook for subsequent 2 days (from 30 August to 01 September, 2016)

- Rain at most places very likely over northeastern states.
- Rain at many places very likely over central & adjoining northwest India, interior peninsular, along west coast and Andaman & Nicobar Islands and at a few places very likely over rest peninsular India.

#### Legend:

Probability of occurrence	Terminology	Probability of occurrence	Terminology
Less than 25%	unlikely	51-75%	Very likely
25-50%	likely	Above 75%	Most likely

•Note: Next report will be issued at 1800 hours IST of 26 August, 2016.

## Table-1

### RAINFALL DISTRIBUTION & MONSOON ACTIVITY 25 AUGUST 2016

S.No.	METEOROLOGICAL SUB-DIVISIONS	DISTRIBUTION	ACTIVITY
1	ANDAMAN & NICOBAR ISLANDS	SCT	
2	ARUNACHAL PRADESH	ISOL	
3	ASSAM & MEGHALAYA	ISOL	
4	NAGA.MANI.MIZO. & TRIPURA	ISOL	
5	SUB-HIMALAYAN WEST BENGAL & SIKKIM	ISOL	
6	GANGETIC WEST BENGAL	ISOL	
7	ODISHA	SCT	NORMAL
8	JHARKHAND	ISOL	
9	BIHAR	DRY	
10	EAST UTTAR PRADESH	ISOL	
11	WEST UTTAR PRADESH	ISOL	
12	UTTARAKHAND	ISOL	
13	HARYANA CHANDIGARH & DELHI	FWS	NORMAL
14	PUNJAB	FWS	VIGOROUS
15	HIMACHAL PRADESH	FWS	NORMAL
16	JAMMU & KASHMIR	SCT	NORMAL
17	WEST RAJASTHAN	WS	ACTIVE
18	EAST RAJASTHAN	FWS	NORMAL
19	WEST MADHYA PRADESH	ISOL	
20	EAST MADHYA PRADESH	ISOL	
21	GUJARAT REG. D.D. & NAGAR HAVELI	FWS	ACTIVE
22	SAURASHTRA KUTCH & DIU	FWS	VIGOROUS
23	KONKAN & GOA	WS	NORMAL
24	MADHYA MAHARASHTRA	SCT	NORMAL
25	MARATHAWADA	SCT	NORMAL
26	VIDARBHA	SCT	
27	CHHATTISGARH	SCT	
28	COASTAL ANDHRA PRADESH	SCT	NORMAL
29	TELANGANA	SCT	NORMAL
30	RAYALASEEMA	ISOL	
31	TAMILNADU & PUDUCHERRY	ISOL	
32	COASTAL KARNATAKA	WS	NORMAL
33	NORTH INTERIOR KARNATAKA	SCT	
34	SOUTH INTERIOR KARNATAKA	SCT	NORMAL
35	KERALA	FWS	NORMAL
36	LAKSHADWEEP	WS	
<b>LEGENDS:</b>			
<b>WS</b>	WIDE SPREAD / MOST PLACES (76-100%)	<b>ISOL</b>	ISOLATED (UP TO 25%)
<b>FWS</b>	FAIRLY WIDE SPREAD / MANY PLACES (51% to 75%)	<b>DRY</b>	NO STATION REPORTED RAINFALL
<b>SCT</b>	SCATTERED / FEW PLACES (26% to 50%)		
<b>ACTIVE</b> (R/F 1 <sup>1</sup> / <sub>2</sub> - 4 TIMES THE NORMAL WITH WS/FWS, AT LEAST 2 STATIONS SHOULD BE 5 CM. ALONG WEST COAST & 3 CM. ELSEWHERE )			
<b>VIGOROUS</b> (R/F MORE THAN 4 TIMES THE NORMAL WITH WS/FWS, AT LEAST 2 STATIONS SHOULD BE 8 CM. ALONG WEST COAST & 5 CM. ELSEWHERE)			

Fig-1

Latest Satellite Image of INSAT-3D 25 AUGUST 2016

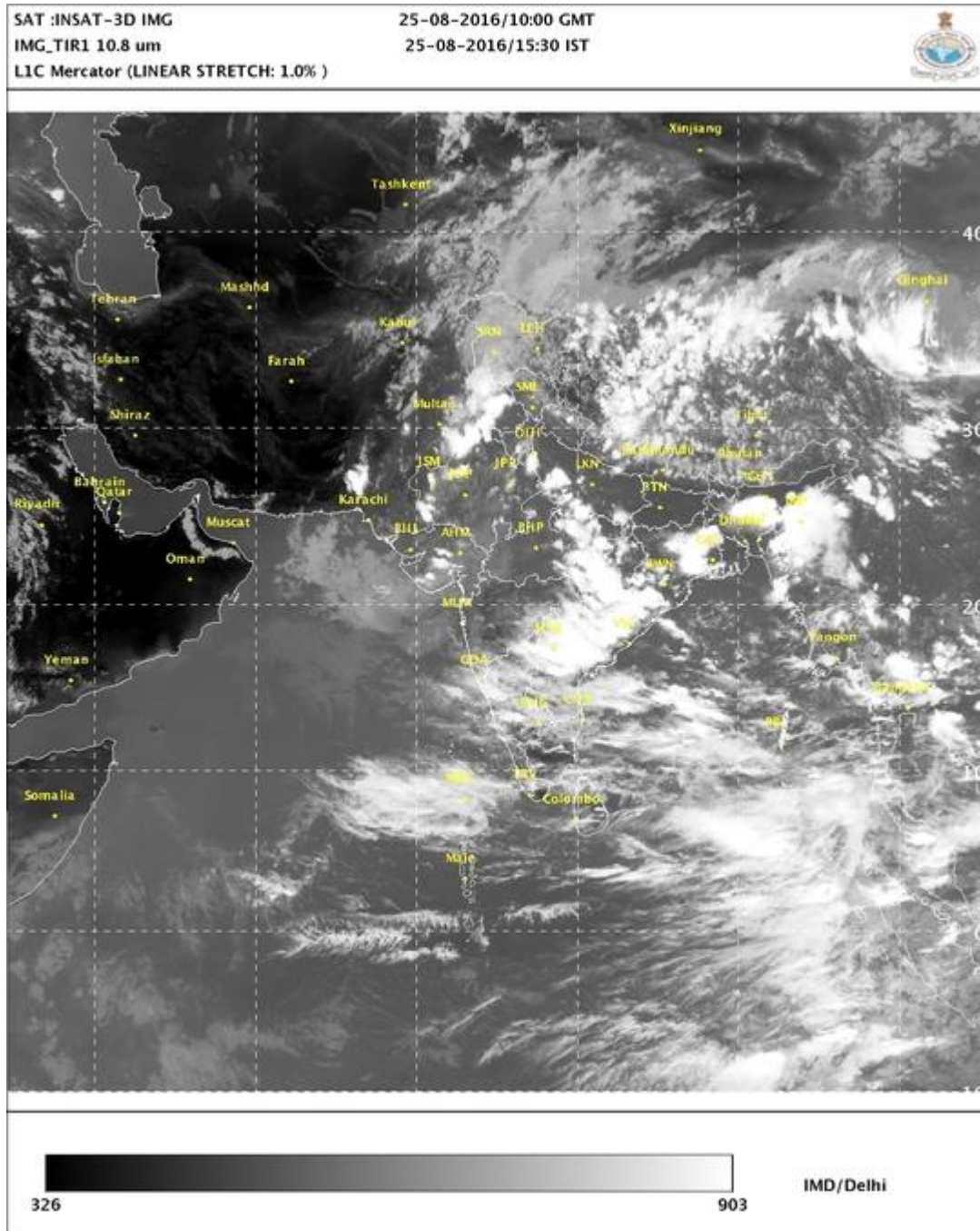


Table-2

## 5-Day Rainfall Forecast

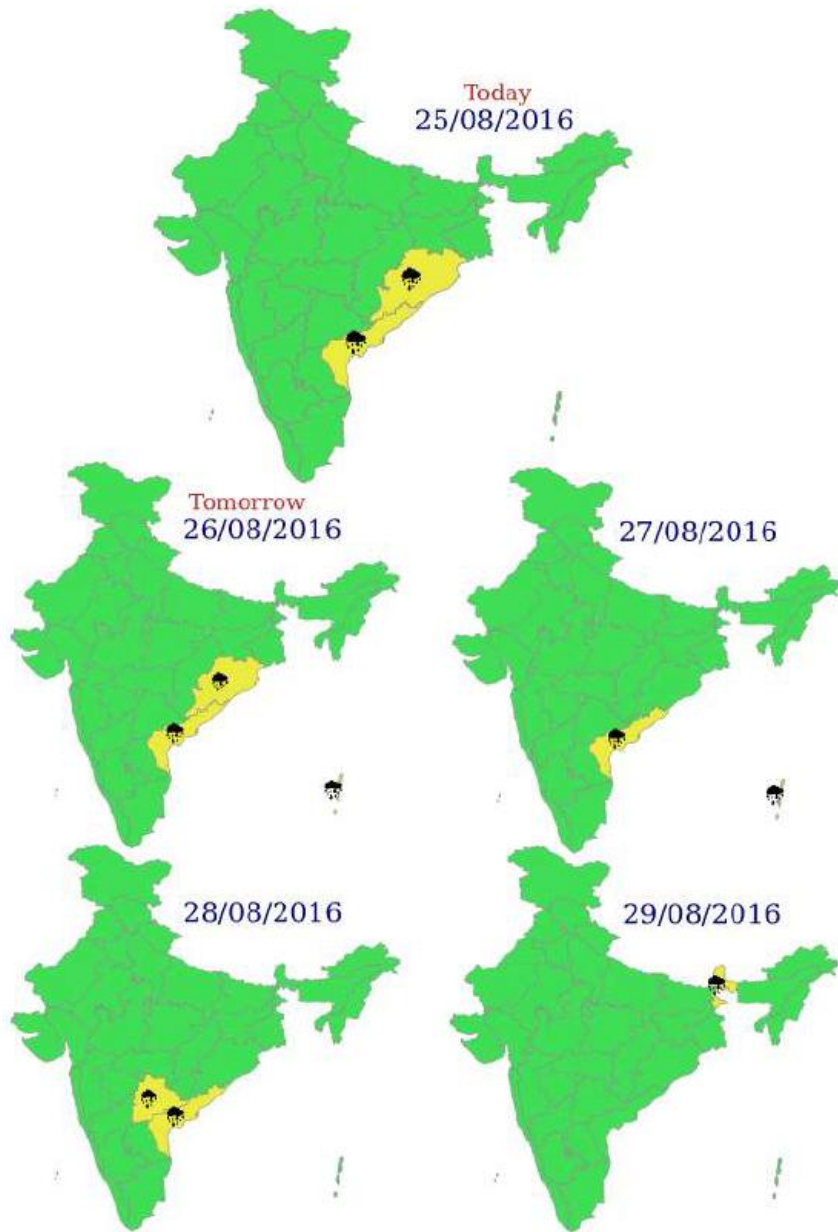
Met-Sub-Division	25-Aug Today	26Aug Fri	27Aug Sat	28Aug Sun	29Aug Mon
1. Andaman & Nicobar Islands	WS	WS	WS	WS	FWS
2. Arunachal Pradesh	ISOL	SCT	SCT	SCT	FWS
3. Assam & Meghalaya	ISOL	ISOL	SCT	FWS	FWS
4. N. M. M. & T.	SCT	FWS	FWS	FWS	FWS
5. S.H. West Bengal & Sikkim	ISOL	SCT	SCT	FWS	FWS
6. Gangetic West Bengal	SCT	ISOL	ISOL	ISOL	ISOL
7. Odisha	FWS	FWS	SCT	SCT	SCT
8. Jharkhand	SCT	SCT	ISOL	ISOL	SCT
9. Bihar	ISOL	ISOL	ISOL	ISOL	SCT
10. East Uttar Pradesh	SCT	SCT	SCT	SCT	SCT
11. West Uttar Pradesh	FWS	SCT	SCT	SCT	FWS
12. Uttarakhand	FWS	FWS	FWS	FWS	WS
13. Haryana, Chd & Delhi	FWS	SCT	SCT	FWS	FWS
14. Punjab	FWS	SCT	SCT	SCT	SCT
15. Himachal Pradesh	FWS	FWS	FWS	FWS	FWS
16. Jammu & Kashmir	FWS	FWS	FWS	FWS	SCT
17. West Rajsthan	FWS	SCT	SCT	SCT	SCT
18. East Rajasthan	FWS	SCT	FWS	FWS	SCT
19. West Madhya Pradesh	SCT	SCT	FWS	FWS	FWS
20. East Madhya Pradesh	SCT	FWS	FWS	FWS	FWS
21. Gujarat Region	FWS	SCT	SCT	SCT	SCT
22. Saurashtra & Kutch	FWS	SCT	ISOL	ISOL	ISOL
23. Konkan & Goa	FWS	FWS	FWS	FWS	FWS
24. Madhya Maharashtra	ISOL	ISOL	ISOL	ISOL	SCT
25. Marathwada	ISOL	ISOL	SCT	SCT	SCT
26. Vidharbha	ISOL	ISOL	SCT	FWS	FWS
27. Chhattisgarh	SCT	FWS	FWS	FWS	SCT
28. Coastal Andhra Pradesh	FWS	WS	WS	WS	FWS
29. Telangana	SCT	SCT	FWS	WS	WS
30. Rayalaseema	SCT	SCT	SCT	SCT	SCT
31. Tamilnadu & Puducherry	SCT	SCT	SCT	ISOL	ISOL
32. Coastal Karnataka	WS	WS	WS	WS	WS
33. North Interior Karnataka	SCT	ISOL	ISOL	SCT	SCT
34. South Interior Karnataka	FWS	SCT	SCT	ISOL	FWS
35. Kerala	WS	WS	FWS	FWS	FWS
36. Lakshadweep	WS	WS	FWS	SCT	SCT

### % Station Reporting Rainfall

% Stations	Category	% Stations	Category
76-100	Widespread (WS/Most Places)	26-50	Scattered (SCT/ A Few Places)
51-75	Fairly Widespred (FWS/ Many Places)	1-25	Isolated (ISOL)
No Rain	Dry		

Fig-2

# Warning



<b>Most Vigil (Take Action)</b>	<b>Keep Vigil (Be prepared/updated)</b>
Be aware (Be updated)	No Warning

- |              |            |              |              |
|--------------|------------|--------------|--------------|
| Heavy Rain   | Heavy Snow | Thunderstorm | Dust Storm   |
| Strong Winds | Visibility | Cyclone      | Squall/ Hail |
| Frost        | Cold Wave  | Heat Wave    | Sea State    |



## Annexure-1

### Significant amounts of rainfall (in cm)

(From 0830 hours IST of yesterday to 0830 hours IST of today)

25 AUGUST 2016

#### GANGETIC WEST BENGAL:

KALAIKUNDA ( IAF)	2	THAKURMUNDA	2	PANIPAT	2
TAMLUK AWS	2	BARIPADA	2	FATEHABAD	2
KOLKATA (ALIPORE)	1	AMBADOLA	2	RANIA	2
KOLKATA (DUM DUM)	1	KALINGA	2	KAITHAL	2
BARRACKPUR( IAF)	1	KAPTIPADA ARG	2	RATTIA	2
DIGHA	1	PATTAMUNDAI	2	DELHI (JAFARPUR AWS)	2
		BARGAON	1	JHAHHAR	1
		DANAGADI ARG	1	KANINA	1
		KEONJHARGARH	1	ASSANDH	1

#### ODISHA:

CHAMPUA	11	RAYAGADA	1	JULANA	1
MARSAGHAI ARG	8	NARLA ARG	1	JIND	1
GARADAPUR ARG	7	KENDRAPARA	1	TOHANA	1
KUJANGA ARG	7	JODA ARG	1	DELHI (PUSA AWS)	1
GHATAGAON	5	KARANJIA	1	ROHTAK AWS	1
KOLABIRA ARG	5	KOSAGUMDA	1	NARNAUL	1
CHANDAHANADI ARG	5	CHANDBALI	1	PEHOWA	1
SWAM-PATNA	5	BALIGUDA	1	BREI ARG	1
BHAWANIPATNA	5	SINAPALI ARG	1	BHAWANIKHERA	1
KHAPRAKHOL ARG	5	JUNAGARH	1	ISRANA	1

#### JHARKHAND:

KURDEGE	2	LOHARU	1
CHAKRADHARPUR	1	BAHADURGARH	1
		CHHACHHRAULI	1
		ROHTAK REV	1
		SAFIDON	1

#### WEST UTTAR PRADESH:

PAWAYAN	1	DELHI (LODI ROAD)	1
MUZAFFARNAGAR	1	DELHI (PALAM)	1
BAGHPAT	1	REWARI	1
MEERUT	1	KOSLI	1
		TAORU	1
		HISSAR	1

#### UTTARAKHAND:

LANSDOWN	2	SIRSA	1
JOSHIMATH	2	JATUSANA	1
UTTAR KASHI	1	UJHA PANIPAT AWS	1
UTTAR KASHI (CWC)	1	PUNHANA	1
		KALAYAT	1
		BARARA	1

#### HARYANA, CHANDIGARH & DELHI:

BARARA ARG	3	MOGA	11
ELLENABAD	3	KAPURTHALA	11
MAHENDRAGARH	3	SHAHPUR KANDI	9
BERI	3	PHAGWARA	8
DUJANA	2	MADHOPUR	7
SADALPUR AWS	2	RANJIT SAGAR DAM SITE	5
DADRI	2	NAKODAR	5
KHARKODA	2	PHANGOTA	5
BHIWANI REV	2	MALAKPUR	5
		FARIDKOT	5

#### PUNJAB:



AMARKANTAK	4	THARAD	1	KOTDASANGANI	2
JABALPUR-NEW--AWS	3	GHOUGHAMBA	1	RAPAR	1
LAKHNADON	3	DHOLERA	1	PADDHARI	1
NARSINGHPUR-AWS	1	WANAKBORI	1	MANDVI(K)	1
<b>GUJARAT REGION:</b>		SURAT CITY	1	DIU	1
		MANGROL	1	LODHKA	1
RADHANPUR	19	MALPUR	1	GHOCHA	1
SANTALPUR	14	SOJITRA	1	DWARKA	1
MAHUDHA	10	MANDAL	1	KHAMBHALIA	1
KATHALAL	6	DHARAMPUR	1	LIMBDI	1
MAHEMDAVAD	6	TALOD	1	RANAVAV	1
SHANKHESHVAR	5	PRANTIJ	1	<b>KONKAN &amp; GOA:</b>	
VASO	5	JOTANA	1		
SAMI	4	KHEDA	1	MARGAO	5
SUIGAM	4	GANDHINAGAR	1	SANGUEM	3
PETLAD	4	DHOLKA	1	DABOLIM N.A.S.- NAVY	3
AHWA_AWS	4	VIJAPUR	1	MAPUSA	3
DANGS (AHWA)	3	LUNAWADA	1	KUDAL	3
WAV	3	CHHOTA UDEPUR	1	KANKAVLI	3
WAGHAI	3	<b>SAURASHTRA &amp; KUTCH:</b>		VAIBHAVWADI	3
NADIAD	3			PANJIM	3
VIRAMGAM	3	SURENDRANAGAR	9	QUEPEM	3
BECHARAJI	3	DASADA	8	PONDA	3
KAPADVANJ	3	DHRANGADHRA	7	SAWANTWADI	3
SANAND	3	WADHVAN	7	VALPOI	3
DETROJ	3	HALVAD	7	KARJAT_AGRI	2
MATAR	3	CHUDA	7	DODAMARG	2
MANSA	2	LAKHTAR	5	MORMUGAO	2
DAHEGAM	2	THANGADH	5	PERNEM	2
DHANDHUKA	2	ABDASA	5	RAJAPUR	2
KHEDBRAHMA	2	RANPUR	5	BHIRA	2
BHABHAR	2	VICHHIYA	5	CHIPLUN	2
BORSAD	2	GONDAL	4	POLADPUR	2
DHAROI COLONY	2	JODIA	4	CANACONA	2
BALASINOR	2	LAKHPAT	4	PEN	2
UMERPADA	2	NAKHATRANA	4	VENGURLA	1
HARIJ	2	TANKARA	3	DEVGAD	1
THASRA	2	CHOTILA	3	JAWHAR	1
SATLASANA	2	SAYLA	3	HARNAI	1
DHANPUR	2	MORBI	3	SHRIWARDHAN	1
KHAMBHAT	2	GADHDA	3	MALVAN	1
BAVLA	2	DHROL	3	GUHAGARH	1
GARBADA	1	BABRA	3	KHALAPUR	1
DEVGADH BARIA	1	JASDAN	3	MOKHEDA - FMO	1
UMRETH	1	BARVALA	3	SANGAMESHWAR DEVRUKH	1
TARAPUR	1	MULI	3	LANJA	1
VIRPUR	1	NALIYA	2	MAHAD	1
ABAD CITY	1	RAJKOT	2	<b>MADHYA MAHARASHTRA:</b>	
VANSDA	1	JAMNAGAR	2		
ANKLAV	1	LATHI	2	MAHABALESHWAR	4
ANAND	1	MALIA_MIANA	2	HARSUL - FMO	3
MANDVI	1	MUNDRA	2	GAGANBAWADA	3
KALOL(G)	1	DHROL_ARG	2	VADGAON MAVAL	3
GHANDINAGAR_AWS	1	BOTAD	2	OZHARKHEDA - FMO	3



RADHANAGARI	2	JANGAMAHESWARAPURAM	3	MANTHANI	1
CHANDGAD	2	GANTYADA	2	YELLANDU	1
PACHORA	1	ATCHAMPET	2	HUZURABAD	1
SHAHUWADI	1	TIRUVURU	2	MUDHOLE	1
AJRA	1	GUDIVADA	2	NARAYANKHED(ARG)	1
SURGANA	1	ADDANKI	2	MADHIRA(ARG)	1
BHADGAON	1	TENALI	1	THOLLADA	1
TALODA	1	SATTENAPALLE	1	KAMAREDDY	1
PAROLA	1	BONDAPALLE	1	MEDAK	1
<b>MARATHWADA:</b>		NANDIGAMA	1	TANDUR	1
JAFRABAD	4	MANGALAGIRI	1	NIZAM SAGAR	1
KALLAMNURI	4	BAPATLA	1	<b>RAYALASEEMA:</b>	
UMARGA	3	NANDIGAMA(ARG)	1	CHITTOOR	2
PARBHANI	2	MASULIPATNAM CDR	1	YEMMIGANUR	1
AHMEDPUR	2	AVANIGADA	1	<b>TAMILNADU &amp; PUDUCHERRY:</b>	
PARTUR	2	NELLIMARLA	1	VANUR	6
SENGAON	2	PRAKASAM BARRAGE	1	PONDICHERRY	5
DEGLOOR - FMO	2	<b>TELANGANA:</b>		VIRUDHUNAGAR	3
BILLOLI	1	BANSWADA	5	MYLAM AWS	3
CHAKUR	1	GHANPUR	5	GINGEE	3
SOEGAON	1	SIRPUR (T)	5	COONOR	2
<b>VIDARBHA:</b>		JUKKAL	4	LOWER KOTHAIYAR ARG	2
KORPANA	6	BIRKOOR	4	KVK KATTUKUPPAM ARG	2
JOITI	2	KONIJERLA	4	PERUNDURAI	2
NANDURA	2	YACHARAM	3	VEDARANYAM	1
SINDKHED RAJA	2	VARNI	3	TRANGAMBADI/TRANQUEB	1
MAHAGAON	1	CHENNUR	3	COONOR PTO	1
SHEGAON	1	RANJAL	3	NADUVATTAM	1
MEHKAR	1	BOATH	2	BHAVANI	1
MULCHERA	1	TADWAI	2	TIRUMANGALAM	1
GONDPIPRI	1	MIRYALAGUDA	2	UTHIRAMERUR	1
<b>CHHATTISGARH:</b>		BONAKAL	2	<b>COASTAL KARNATAKA:</b>	
DONGARGARH	3	NIZAMABAD	2	MULKI	5
KAWARDHA	2	KOTGIRI	2	MANGALURU	4
DEOBHOG	1	JANGAON	2	KUMTA	3
RAMANUJGANJ	1	KALESWARAM	2	KARKALA	3
DANTEWARA	1	PITLAM	2	MANGALURU AP OBSY	3
<b>COASTAL ANDHRA PRADESH:</b>		BHEEMADEVARPALLE	2	GOKARNA	3
MENTADA	9	JULURPAD	2	KADRA	3
MERAKAMUDIDAM	7	BHUPALPALLE	2	PANAMBUR OBSY	2
VIZIANAGARAM	5	YELLAREDDY	2	GERSOPPA	2
GUNTUR	5	MADNUR	2	UDUPI	2
REPALLE	5	CHEVELLA	1	BANTWAL	2
GAJAPATHINAGARAM	4	LINGAMPET	1	KARWAR OBSY	2
NUZVID	4	NAVIPET	1	SHIRALI PTO	2
THERLAM	3	RAMGUNDAM	1	ANKOLA	1
ANAKAPALLE	3	KOTHAGUEDEM (DISTRICT:		SIDDAPURA	1
CHODAVARAM	3	WARANGAL)	1	JAGALBET	1
PIDUGURALLA	3	MADHIRA	1	HONAVAR OBSY	1
		NARAYANKHED	1	SIDDAPUR	1
		PALAWANCHA	1		
		KHAMMAM URBAN	1		
		KUSUMANCHI	1		

DHARMASTHALA	1	KAYAMKULAM_ AGRI	3	KUDULU	1
<b>SOUTH INTERIOR KARNATAKA:</b>		CHENGANNUR	3	VARKALA	1
AGUMBE EMO	3	KOLLAM RLY	2	HOSDURG	1
THALAGUPPA	2	KAYAMKULAM	2	IRINJALAKUDA	1
HULIKAL ARG	2	THODUPUZHA	2	HARIPAD	1
LINGANAMAKKI HMS	1	KOZHA	2	ALWAYE PWD	1
BHADRAVATHI	1	MAVELIKARA	2	ANGADIPURAM	1
JAYAPURA	1	KANJIRAPPALLY	2	<b>LAKSHADWEEP:</b>	
<b>KERALA:</b>		KUMARAKAM	2	MINICOY	3
VAIKOM	4	PIRAVAM	2		
PUNALUR	4	VYTTIRI	1		
KURUDAMANNIL	3	KOTTAYAM	1		
KONNI	3	ERNAKULAM SOUTH	1		
ALAPUZHA	3	KOCHI I.A.F.	1		
		MANCOMPU	1		
		CHERTHALA	1		
		KOCHI C.I.A.L.	1		

### LEGEND

(A) / AWS--Automated Weather Station  
 ARG--Automated Rain-Gauge  
 SR--State Raingauge  
 AP--Airport  
 IAF--Indian Air Force

IMD--India Meteorological Department  
 PWD--Public Works Department  
 PT / PTO--Part Time Observatory  
 CDR--Cyclone Detection Radar  
 CWC--Central Water Commission

FMO--Flood Met. Office  
 PBO--Pilot Balloon Observatory  
 REV--Revenue