



Special Daily Weather Report 22 September, 2014

Monsoon Watch

- Conditions continue to be favourable for the withdrawal of Southwest Monsoon from some parts of northwest India during next 24 hours.
- The southwest monsoon has been vigorous over Assam & Meghalaya and Sub-Himalayan West Bengal & Sikkim and active over Arunachal Pradesh, Gangetic West Bengal and Jharkhand.
- Satellite Imagery of INSAT 3-D is shown in (Fig.1).

Seasonal Rainfall (in mm) from 1 June to 21st September, 2014

| <u>Region</u> | <u>Actual</u> | <u>Normal</u> | <u>% Departure from Long Period Average</u> |
|------------------------|---------------|---------------|---|
| All India | 747.0 | 843.1 | -11% |
| East & Northeast India | 1163.2 | 1358.9 | -14% |
| Northwest India | 468.8 | 592.0 | -21% |
| Central India | 874.8 | 934.0 | -6% |
| South Peninsula | 625.6 | 661.9 | -5% |

Weather Forecast valid upto 0830 hours IST of 25th September, 2014

- Meteorological Sub-division wise 3 day rainfall forecast is shown in (Table-1).
- Sub-division wise rainfall recorded from 0830 hrs IST of yesterday to 0830 hrs IST of today is shown in (Table-2).

Warning (Fig.2).

22 September (Day 1):

- ◆ Heavy to very heavy rainfall would occur at a few places with extremely heavy falls at isolated places over Assam & Meghalaya and Arunachal Pradesh.
- ◆ Heavy to very heavy rainfall would occur at a few places over Sub-Himalayan West Bengal & Sikkim.
- ◆ Heavy rainfall would occur at isolated places over Nagaland, Manipur, Mizoram & Tripura, Interior Tamilnadu and South Interior Karnataka.

23 September (Day 2):

- ◆ Heavy to very heavy rainfall would occur at a few places with extremely heavy falls at isolated places over Assam & Meghalaya.
- ◆ Heavy to very heavy rainfall would occur at isolated places over Arunachal Pradesh.
- ◆ Heavy rainfall would occur at isolated places over Sub-Himalayan West Bengal & Sikkim, Nagaland, Manipur, Mizoram & Tripura and South Interior Karnataka.

24 September (Day 3):

- ◆ Heavy to very heavy rainfall would occur at isolated places over Assam & Meghalaya.
- ◆ Heavy rainfall would occur at isolated places over Interior Tamilnadu.

Weather Outlook for subsequent 4 days (from 25th to 29th September, 2014)

- ◆ Rain/thundershowers would occur at many places over northeastern states and peninsular India.
- ◆ Rain/thundershowers would occur at isolated places over Western Himalayan region, West, Central and East India.
- ◆ Weather would be mainly dry over rest of the country.

Legend:

| Probability of occurrence | Terminology | Probability of occurrence | Terminology |
|---------------------------|-------------|---------------------------|-------------|
| ≤25% | Could Occur | 51-75% | Would Occur |
| 26-50% | May Occur | 76-100% | Will Occur |

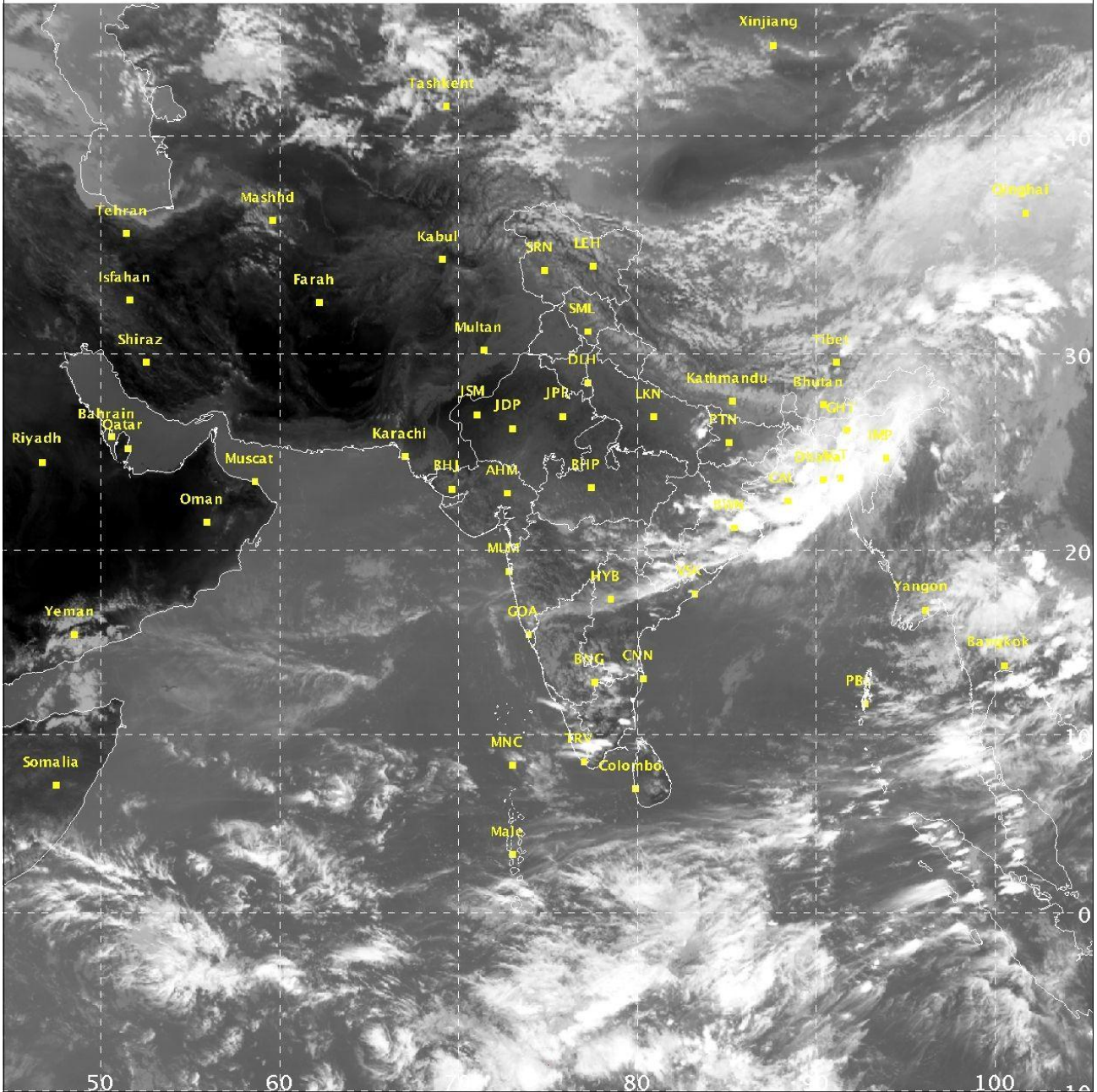
Note: Next report will be issued at 1800 hours IST of 23rd September, 2014.

Fig-1

Satellite Imagery of INSAT 3-D 22 September 2014

SAT :INSAT-3D IMG
IMG_TIR1 10.8 um
LIC Mercator
LINEAR Stretch: 1.0%

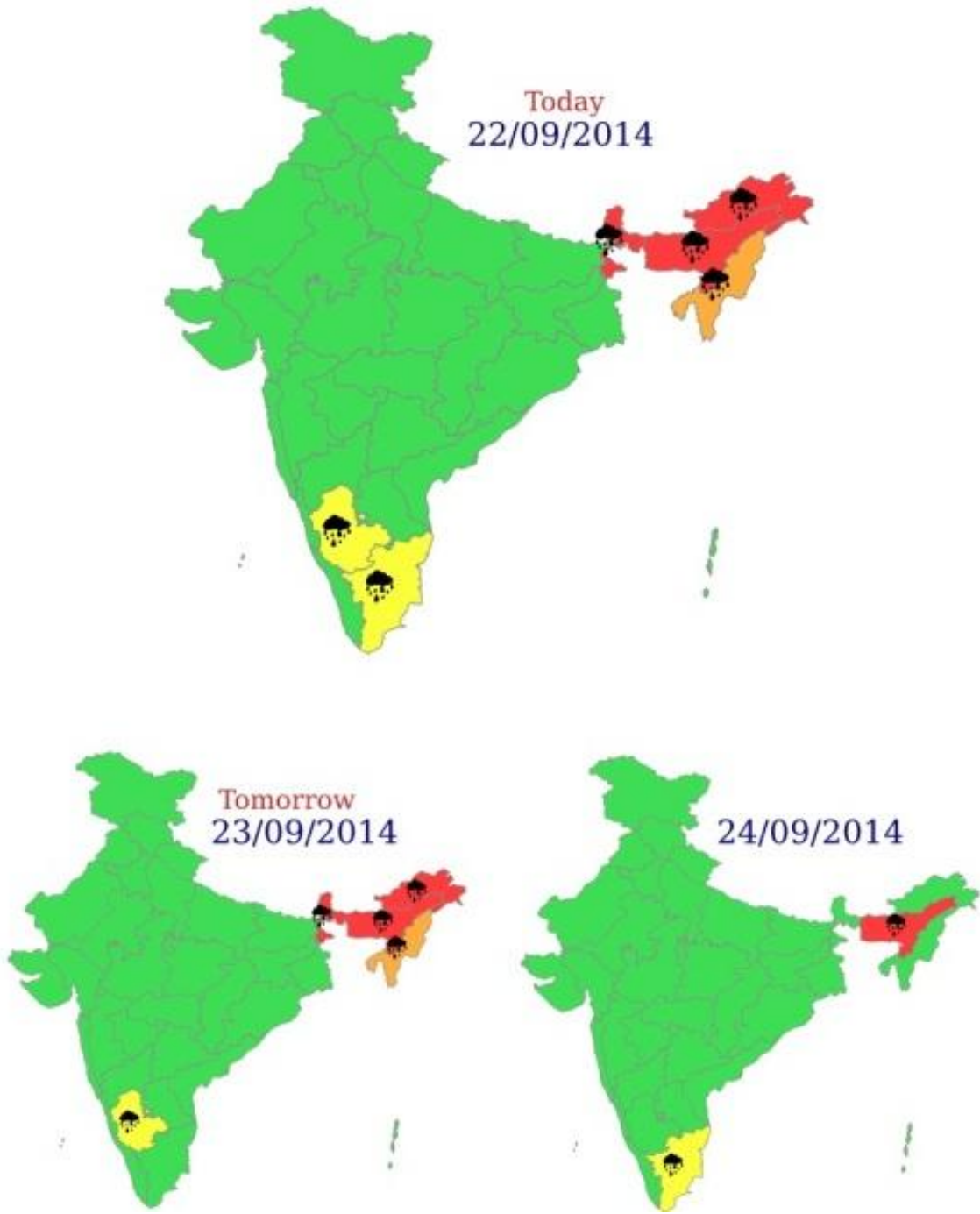
22-09-2014/09:30 GMT
22-09-2014/15:00 IST



IMD/Delhi

Fig-2

Warning (For next 3 day)



* The Warning for any day is valid from 0830 hours IST of the day till 0830 hours IST of the next day

| | |
|----------------------------------|-----------------------|
| Most Vigil (Take Action) | Be aware (Be updated) |
| Be prepared/updated (Keep Vigil) | No Warning |

Table -1

| | |
|--------------------------------|--------------------------|
| 3 Day Rainfall Forecast | 22 September 2014 |
|--------------------------------|--------------------------|

| S.No | MET. SUB-DIVISION | Forecast | | |
|------|---------------------------|------------|------------|------------|
| | | 22-09-2014 | 23.09.2014 | 24.09.2014 |
| 1 | A & N Islands | ISOL | SCT | SCT |
| 2 | Arunachal Pradesh | WS | WS | FWS |
| 3 | Assam & Meghalaya | WS | WS | FWS |
| 4 | Nag, Mani, Mizo & Tripura | FWS | FWS | FWS |
| 5 | SHWB & Sikkim | WS | FWS | FWS |
| 6 | Gangetic West Bengal | FWS | SCT | SCT |
| 7 | Odisha | SCT | SCT | SCT |
| 8 | Jharkhand | SCT | ISOL | ISOL |
| 9 | Bihar | SCT | ISOL | ISOL |
| 10 | East Uttar Pradesh | ISOL | ISOL | MD |
| 11 | West Uttar Pradesh | MD | MD | MD |
| 12 | Uttarakhand | ISOL | ISOL | ISOL |
| 13 | Haryana, Chd & Delhi | MD | MD | MD |
| 14 | Punjab | MD | MD | MD |
| 15 | Himachal Pradesh | ISOL | MD | MD |
| 16 | Jammu & Kashmir | ISOL | MD | MD |
| 17 | West Rajasthan | MD | MD | MD |
| 18 | East Rajasthan | MD | MD | MD |
| 19 | West Madhya Pradesh | MD | MD | MD |
| 20 | East Madhya Pradesh | ISOL | ISOL | ISOL |
| 21 | Gujarat Region | MD | MD | MD |
| 22 | Saurashtra, Kutch & Diu | MD | MD | MD |
| 23 | Konkan & Goa | ISOL | ISOL | ISOL |
| 24 | Madhya Maharashtra | ISOL | ISOL | ISOL |
| 25 | Marathawada | ISOL | ISOL | ISOL |
| 26 | Vidarbha | ISOL | ISOL | MD |
| 27 | Chhattisgarh | ISOL | ISOL | ISOL |
| 28 | Coastal Andhra Pradesh | ISOL | ISOL | ISOL |
| 29 | Telangana | ISOL | ISOL | ISOL |
| 30 | Rayalaseema | ISOL | ISOL | SCT |
| 31 | Tamilnadu & Pudd. | FWS | FWS | FWS |
| 32 | Coastal Karnataka | ISOL | ISOL | FWS |
| 33 | N I Karnataka | SCT | SCT | SCT |
| 34 | S I Karnataka | FWS | FWS | FWS |
| 35 | Kerala | SCT | FWS | FWS |
| 36 | Lakshadweep | SCT | SCT | SCT |

| % of Stations reporting Rainfall | | | |
|----------------------------------|--------------------------------------|------------|-------------------------------|
| % Stations | Category | % Stations | Category |
| 76-100 | Widespread (WS/Most Places) | 26-50 | Scattered (SCT/ A Few Places) |
| 51-75 | Fairly Widespread (FWS/ Many Places) | 1-25 | Isolated (ISOL) |
| Very Light Rain | Mainly Dry | No Rain | Dry |

Table-2
Significant amounts of rainfall (in cm)
 (From 0830 IST of yesterday to 0830 IST of today)
22 September 2014

| | | | | | |
|---------------------------------------|----|--|----|--|----|
| ANDAMAN & NICOBAR ISLANDS: | | Motunga | 12 | Mokokchung (AWS) | 1 |
| | | Majbat | 11 | Bagafa | 1 |
| | | Guwahati (AP) | 11 | Lengpui | 1 |
| Maya Bandar | 1 | Patharughat (AWS) | 10 | Serchip | 1 |
| | | Nongstoin (AWS) | 10 | Lengpui (AWS) | 1 |
| ARUNACHAL PRADESH: | | AIE N H Xing | 10 | Sonamura | 1 |
| | | Darrang Range Forest | 8 | Belonia | 1 |
| Passighat | 7 | Chandrapur (AWS) | 8 | Teliamura | 1 |
| Tawang (AWS) | 6 | Mangaldai (AWS) | 8 | Kailasahar | 1 |
| Mukto (AWS) | 6 | Raha (AWS) | 8 | | |
| Bhalukpong | 6 | Guwahati (AWS) | 7 | SUB HIMALAYAN WEST BENGAL & SIKKIM: | |
| Miao | 3 | Dhubri (CWC) | 7 | | |
| Changlang | 3 | Bahalpur | 7 | Barobhisha | 24 |
| Tuting | 3 | Laharighat (AWS) | 7 | Cooch Behar | 23 |
| Basar (AWS) | 3 | Dhekiajuli (AWS) | 6 | Chepan | 20 |
| Roing | 3 | Jowai (AWS) | 6 | Kumargram | 17 |
| Along (AWS) | 2 | Beki Rd. Bridge | 6 | Falakata | 16 |
| Daporijo | 2 | Tezpur | 5 | Mathabhanga | 16 |
| Itanagar | 2 | Manas N H Xing | 5 | Alipurduar (CWC) | 11 |
| Changlang (AWS) | 2 | Dhekiajuli | 5 | Hasimara | 11 |
| Tezu | 2 | Khowang | 5 | Buxaduar | 10 |
| Namsai | 2 | Kampur | 4 | Malda | 6 |
| Deomali | 1 | Dhollabazar | 4 | Balurghat | 5 |
| M.C. Itanagar | 1 | Dillighat | 4 | NH 31 Bridge | 4 |
| Seppa | 1 | Khetri (ARG) | 4 | Jalpaiguri | 4 |
| | | Beki-Mathanguri | 4 | Darjeeling | 4 |
| ASSAM & MEGHALAYA: | | Tamulpur (ARG) | 4 | Domohani | 3 |
| | | Naharkatia | 4 | Rongo | 3 |
| Tikrikilla | 54 | Moran (ARG) | 4 | Chengmari/Diana | 2 |
| Williamnagar | 45 | Jia Bharali N T Xing | 3 | Champasari | 2 |
| Goalpara (CWC) | 37 | Umiam (ARG) | 3 | Siliguri (AWS) | 2 |
| Goalpara | 34 | Kakopathar (ARG) | 3 | Sevoke | 2 |
| Goalpara (AWS) | 32 | Shillong | 3 | Murti | 1 |
| Williamnagar (AWS) | 31 | Shillong (AWS) | 3 | Gajoldoba | 1 |
| Kajigaon (AWS) | 28 | Dhemaji (AWS) | 2 | Bagdogra (IAF) | 1 |
| Gossaigaon | 25 | Barapani | 2 | Bagrakote | 1 |
| Kokrajhar | 24 | Teok (ARG) | 2 | Nagarkata | 1 |
| Srijangram (AWS) | 24 | Sibsagar | 2 | Neora | 1 |
| Gossaigaon (AWS) | 24 | Tinsukia | 2 | Damthang | 1 |
| Dhubri | 21 | Jorhat | 2 | Sukiapokhri | 1 |
| Barpeta (AWS) | 19 | North Lakhimpur | 2 | Namchi (AWS) | 1 |
| Barpeta | 17 | Bijni (ARG) | 2 | Majitar | 1 |
| Cherrapunjee (RKM) | 17 | Bihubar | 2 | Kalimpong | 1 |
| Rangia (AWS) | 17 | Chouldhowaghat | 1 | Khanitar | 1 |
| Barpeta (AWS) | 16 | Maranhat | 1 | | |
| Rongara (AWS) | 16 | Dibrugarh (AP) | 1 | GANGETIC WEST BENGAL: | |
| Chamata (AWS) | 15 | Margherita | 1 | | |
| Udalguri (AWS) | 15 | Matijuri | 1 | Purihansa | 12 |
| Cherrapunji | 15 | Karimganj | 1 | Tusuma | 11 |
| Panbari | 15 | Lakhimpur (ARG) | 1 | Durgapur | 8 |
| Kokilabari (AWS) | 15 | Nongpho | 1 | Asansol (CWC) | 7 |
| Nalbari | 13 | | | Kolkata (Alipore) | 4 |
| Baghmara (AWS) | 13 | NAGALAND, MANIPUR, MIZORAM & TRIPURA: | | Kharidwar | 4 |
| Dharamtul | 12 | | | Simula | 4 |
| Puthimari | 12 | | | Contai | 3 |
| Baiha Chariali (AWS) | 12 | Chandel (AWS) | 4 | | |

| | | | | | |
|----------------------|----|---------------------|---|-----------------------------|----|
| Bankura (CWC) | 3 | Jeypore | 2 | Pakur | 1 |
| Narayanpur | 3 | Birmaharajpur (AWS) | 2 | Japla | 1 |
| Diamond Harbour | 3 | Gaisilet (AWS) | 1 | Putki | 1 |
| Durgachack | 3 | Tentulikhunti (AWS) | 1 | Balumath | 1 |
| Sri Niketan | 3 | Padampur | 1 | Mohanpur | 1 |
| Canning | 3 | Phulbani | 1 | Manatu | 1 |
| Purulia | 3 | Bolagarh (AWS) | 1 | Pakuria | 1 |
| Bankura | 2 | Tangi | 1 | Ranchi Aero | 1 |
| Basirhat(PTO) | 2 | Champua | 1 | Satgaon | 1 |
| Baruipur Agro (AWS) | 2 | Talcher | 1 | Hazaribagh | 1 |
| Tantloi | 2 | Koraput | 1 | Markachou | 1 |
| Kolkata (Dum Dum) | 2 | Khairamal | 1 | Chandil | 1 |
| Panagarh (IAF) | 2 | Narla (AWS) | 1 | | |
| Kansabati Dam | 2 | Kosagumda | 1 | BIHAR: | |
| Jagatballavpur (AWS) | 1 | Mundali | 1 | Dhengraghat | 12 |
| Deganga (AWS) | 1 | Gop | 1 | Chargharia | 5 |
| Barrackpur(IAF) | 1 | Satyabadi (AWS) | 1 | Galgalia | 4 |
| Gheropara | 1 | Rairakhol | 1 | Kuratha | 4 |
| Berhampore | 1 | Harabhanga | 1 | Kursela | 4 |
| Rampurhat (DRMS) | 1 | Similiguda (AWS) | 1 | Taibpur | 3 |
| Phulberia | 1 | Paradeep (CWR) | 1 | Banka | 3 |
| Suri (CWC) | 1 | | | Purnea | 3 |
| | | JHARKHAND: | | Indrapuri | 3 |
| ODISHA: | | Maheshpur | 9 | Cheria B.Pur | 2 |
| Krishnaprasad | 11 | Maithon | 9 | Deo | 2 |
| Rairangpur | 11 | Sarath | 9 | Daudnagar | 2 |
| Athmalik | 7 | Barkisuriya | 7 | Baltara | 1 |
| Rajkishorenagar | 7 | Jamtara | 6 | Gaya Aero | 1 |
| Jujumura (AWS) | 7 | Dumka | 6 | Tribeni Balmiki | 1 |
| Laikera | 6 | Jarmindi | 6 | Dehri | 1 |
| Kolabira (AWS) | 6 | Nandadih | 5 | Araria | 1 |
| Jharsuguda | 6 | Kolebira | 5 | Sabour | 1 |
| Kirmira (AWS) | 5 | Tundi | 5 | | |
| Kuchinda | 5 | Rajmahal | 4 | EAST UTTAR PRADESH: | |
| Boudhgarh | 5 | Kharsema | 4 | Dudhi | 4 |
| Hirakud | 5 | Dhanbad | 4 | Gorakhpur | 2 |
| Deogaon | 5 | Hiranpur | 4 | Turtipar | 2 |
| Puri | 4 | Moharo | 3 | Mohammedabad | 1 |
| Sundargarh | 4 | Panchet | 3 | Deogaon Lalganj | 1 |
| Bamra (AWS) | 4 | Koderma | 3 | Bahraich | 1 |
| Burla (AWS) | 3 | Ghatsila | 3 | Tarabganj | 1 |
| Jharbandh (AWS) | 3 | Tilaiya | 3 | Bansgaon | 1 |
| Tarva (AWS) | 3 | Torpa | 3 | Ghosi | 1 |
| Jamankira | 3 | Jamshedpur | 3 | | |
| Tiring | 3 | Messenjore | 3 | WEST MADHYA PRADESH: | |
| Tensa | 3 | Ormangi Ormang | 2 | Harda (AWS) | 1 |
| Pallahara | 3 | Topchanchi | 2 | | |
| Joshiapur | 3 | Papunki | 2 | GUJARAT REGION: | |
| Atabira (AWS) | 2 | Jaridih | 2 | Dharampur | 1 |
| Karanjia | 2 | Amrapara | 2 | | |
| Brahmagiri (AWS) | 2 | Tenughat | 2 | KONKAN & GOA: | |
| Sambalpur | 2 | Godda | 2 | Shriwardhan | 2 |
| Nawarangpur | 2 | Madhupur | 2 | Khed | 1 |
| Astaranga (AWS) | 2 | Dumri | 2 | Bhira | 1 |
| Kakatpur | 2 | Pathargama | 1 | | |
| Kesinga (AWS) | 2 | Ramgarh | 1 | | |
| Paikmal | 2 | Bagodar | 1 | | |
| Tikarpara | 2 | Koner | 1 | | |

| | | | | | |
|------------------------|----|----------------------|---|---------------------------|---|
| Karjat Agri | 1 | Kaveripakkam | 8 | Melalathur | 1 |
| VIDARBHA: | | Tiruvannamalai | 8 | Srimushnam | 1 |
| | | Virudachalam | 7 | Naduvattam | 1 |
| | | Chembarabakkam | 7 | Arakonam | 1 |
| Tirora | 3 | Ulundurpet | 6 | COASTAL KARNATAKA: | |
| Ramtek | 3 | Vanur | 5 | | |
| Deori | 3 | Sholavandan | 5 | Subramanya | 2 |
| Goregaon | 3 | Vandavasi | 5 | NORTH INTERIOR | |
| Mohadi | 2 | Virinjipuram (AWS) | 5 | KARNATAKA: | |
| Tumsar | 2 | Polur | 5 | | |
| Salekasa | 2 | Tambaram | 5 | Jeewargi | 5 |
| Arjuni Morgaon | 1 | Vellore | 5 | Hubli | 2 |
| Sakoli | 1 | Chembarabakkam (AWS) | 5 | Kundgol | 1 |
| Dhanora | 1 | Kalavai (AWS) | 4 | SOUTH INTERIOR | |
| CHHATTISGARH: | | Wallajah | 4 | KARNATAKA: | |
| | | Vadipatti | 4 | | |
| | | Gingee | 4 | Agumbe | 2 |
| Katghora | 3 | Ponneri | 4 | Royalpadu | 1 |
| Bemetara | 3 | Uthiramerur | 4 | Bhagamandala | 1 |
| Pallari/Palari | 2 | Poondi | 3 | | |
| Bhanupratappur | 2 | Thiruvallangadu | 3 | | |
| Bilaspur | 2 | Cheyar | 3 | | |
| Baloda Bazar | 1 | Chennai (AP) | 3 | | |
| Deobhog | 1 | Sankarapuram | 3 | | |
| Balod | 1 | Arani | 3 | | |
| Pali | 1 | Pullambadi | 3 | | |
| | | Anna University | 2 | | |
| COASTAL ANDHRA | | Poonamalle (AWS) | 2 | | |
| PRADESH: | | Tindivanam | 2 | | |
| | | Sriperumbudur | 2 | | |
| Parvatipuram | 4 | Sholingur | 2 | | |
| Garugubilli | 1 | Sendurai | 2 | | |
| Pathapatnam | 1 | Tiruvallur | 2 | | |
| TELANGANA: | | Manapparai | 2 | | |
| | | Mahabalipuram | 1 | | |
| Sathupalle | 4 | Thamaraipakkam | 1 | | |
| Thimmapur | 2 | Thogamalai | 1 | | |
| Ibrahimpatnam | 1 | Anna Uty (AWS) | 1 | | |
| Nizamabad | 1 | Mangalapuram | 1 | | |
| Metpalle | 1 | Poonamallee | 1 | | |
| Luxettipet | 1 | Chennai (N) | 1 | | |
| Navipet | 1 | Kelambakkam | 1 | | |
| Kampasagar(AWS) | 1 | Padalur | 1 | | |
| RAYALASEEMA: | | Natham | 1 | | |
| | | Tirukoilur | 1 | | |
| Satyavedu | 2 | Valparai (PTO) | 1 | | |
| Hindupur | 1 | Neyveli (AWS) | 1 | | |
| Kuppam | 1 | Kolapakkam (AWS) | 1 | | |
| TAMILNADU & | | Thirukoilur (AWS) | 1 | | |
| PUDUCHERRY: | | Ariyalur | 1 | | |
| | | Mylam (AWS) | 1 | | |
| Kallakurichi (AWS) | 12 | Gudiyatham | 1 | | |
| Kallakurichi | 12 | Tindivanam Nicra | 1 | | |
| Vilupuram | 10 | Panruti | 1 | | |
| Pondicherry | 9 | Samayapuram | 1 | | |
| | | Cuddalore | 1 | | |
| | | Yercaud | 1 | | |
| | | DGM Office | 1 | | |
| | | Vaniyambadi | 1 | | |