



Fleet Weather Center – San Diego

NAEFS Conference
Mr. Rodney Jacques
Meteorologist
5/2/2012



CAPT Todd Monroe
Commanding Officer

CDR Mike Kuypers
Executive Officer

AGCM Matt White
Command Master Chief

LCDR Thomas Keefer
Fleet Liaison Officer



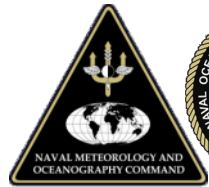
FWC-SD Mission Statement



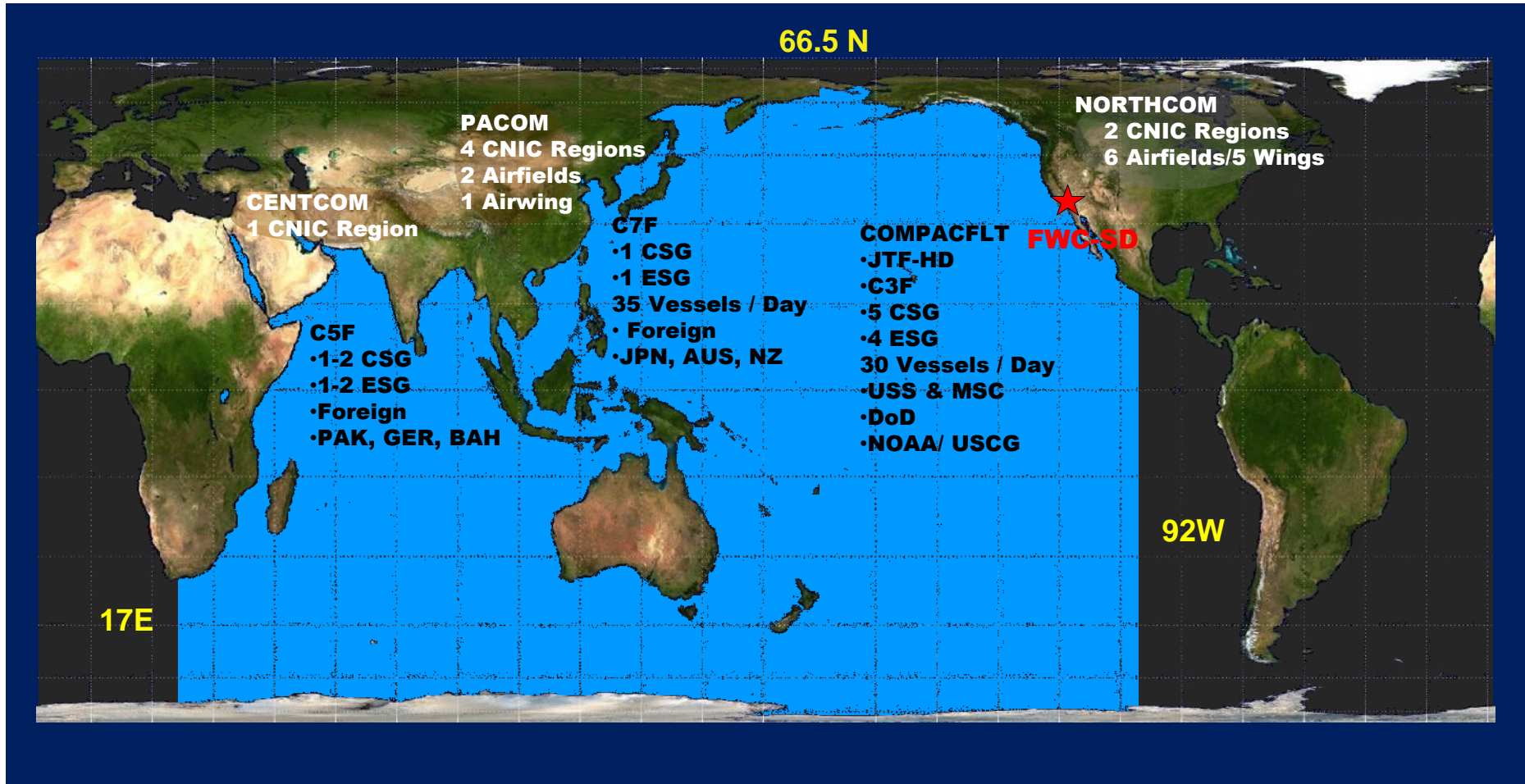
- Provide full-spectrum weather services to facilitate risk management, resource protection, and mission success of Fleet, Regional, and Individual Unit Commanders
- Man, train, and equip deployable teams to provide timely and relevant METOC services in direct support of Carrier Strike Group and Amphibious Readiness Group (CSG/ARG) Operations



“No Surprises for the Navy due to Weather on our Watch”



Geographic AOR



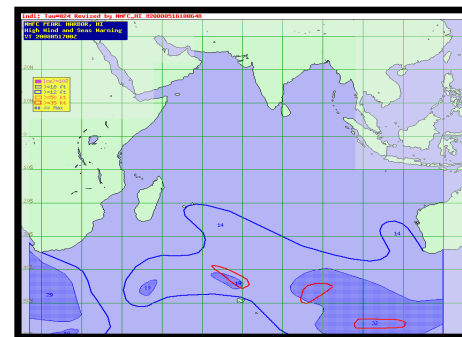
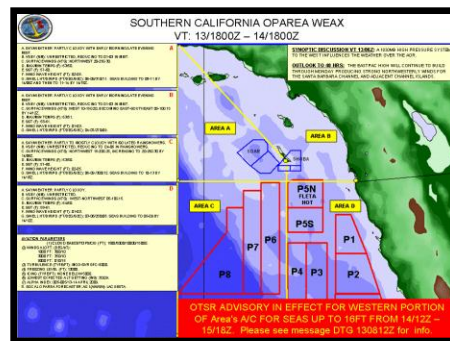
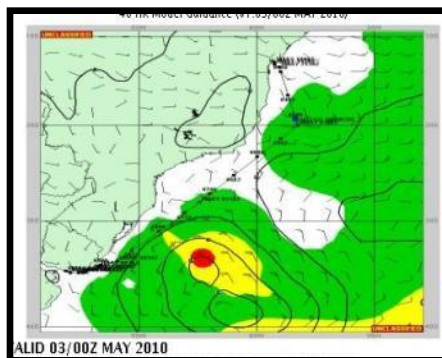
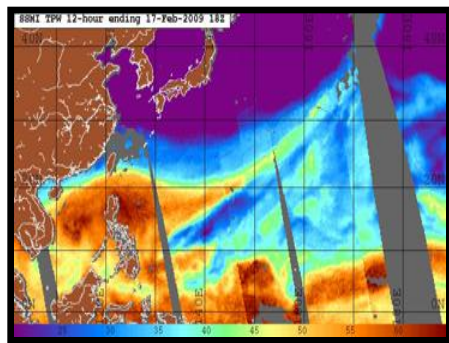
FWC-SD AOR is approximately 2/3 of the Globe

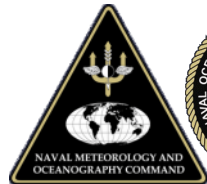
Optimum Track Ship Routing (OTSR)

- Hazardous weather advisories
- Divert and sortie recommendations
- Fuel efficiency route planning

Daily Underway Forecasts

- OPAREA Forecasts (SOCAL/5th Fleet/Diego Garcia)
- Ship WEAX (Graphical and Text)
- Ship with Embarked Helo (AVWX)
- High Winds and Seas Warnings



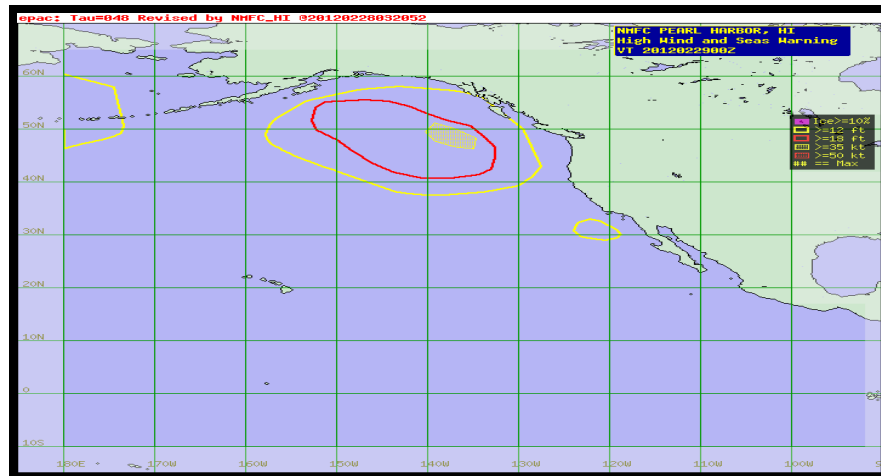


High Wind and Seas/OPAREA



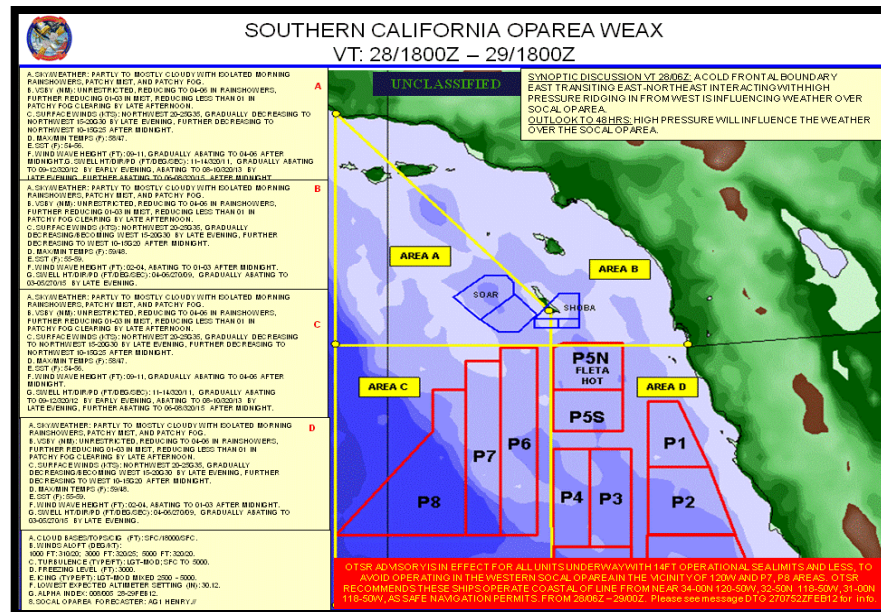
High Winds and Seas

- Issued Twice Daily (00Z 12Z)
- Depicts >12ft seas /35Kts
- https://pki-metocph.nmci.navy.mil/products/forecast/e_pac_WS_00z.gif



SOCAL OPAREA Forecast

- Issued Twice Daily (00Z 12Z)
- Sent via email / on NEP-Oc
- Forecast in each Ops Box
- <https://pki-metocph.nmci.navy.mil/products/forecast/socalfcstgraphic.gif>





Optimum Track Ship Routing



Advisory service for ships to minimize the risk of damage from storms, high seas and sea ice. Products are normally sent at least 48 hours prior to your departure or the weather event.

- Requested on MOVREP
- Advisories / Diverts issued when forecast meets or exceeds ship limits
- Divert non-comply permission required (PACFLT or C3F)



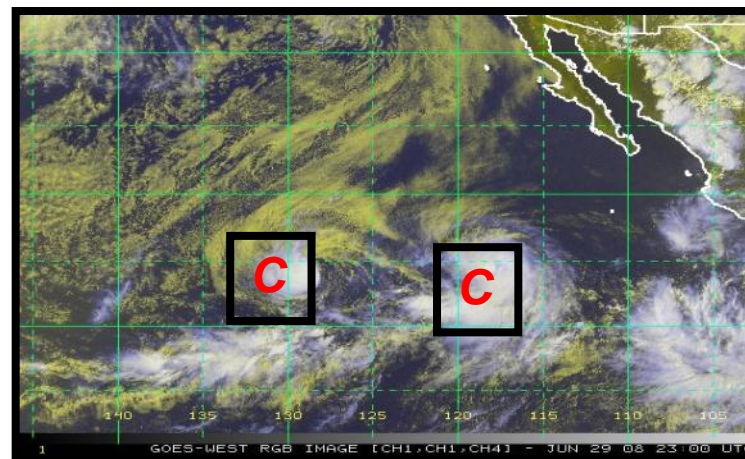
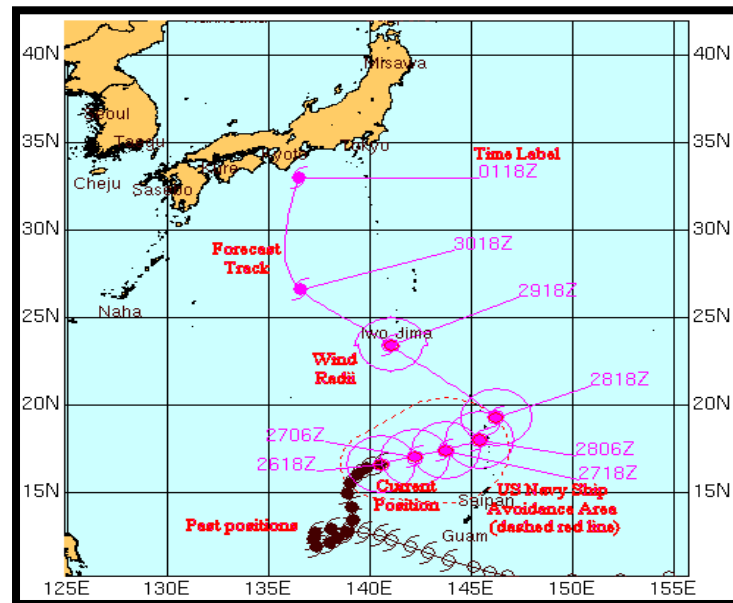


Tropical Cyclone Warnings



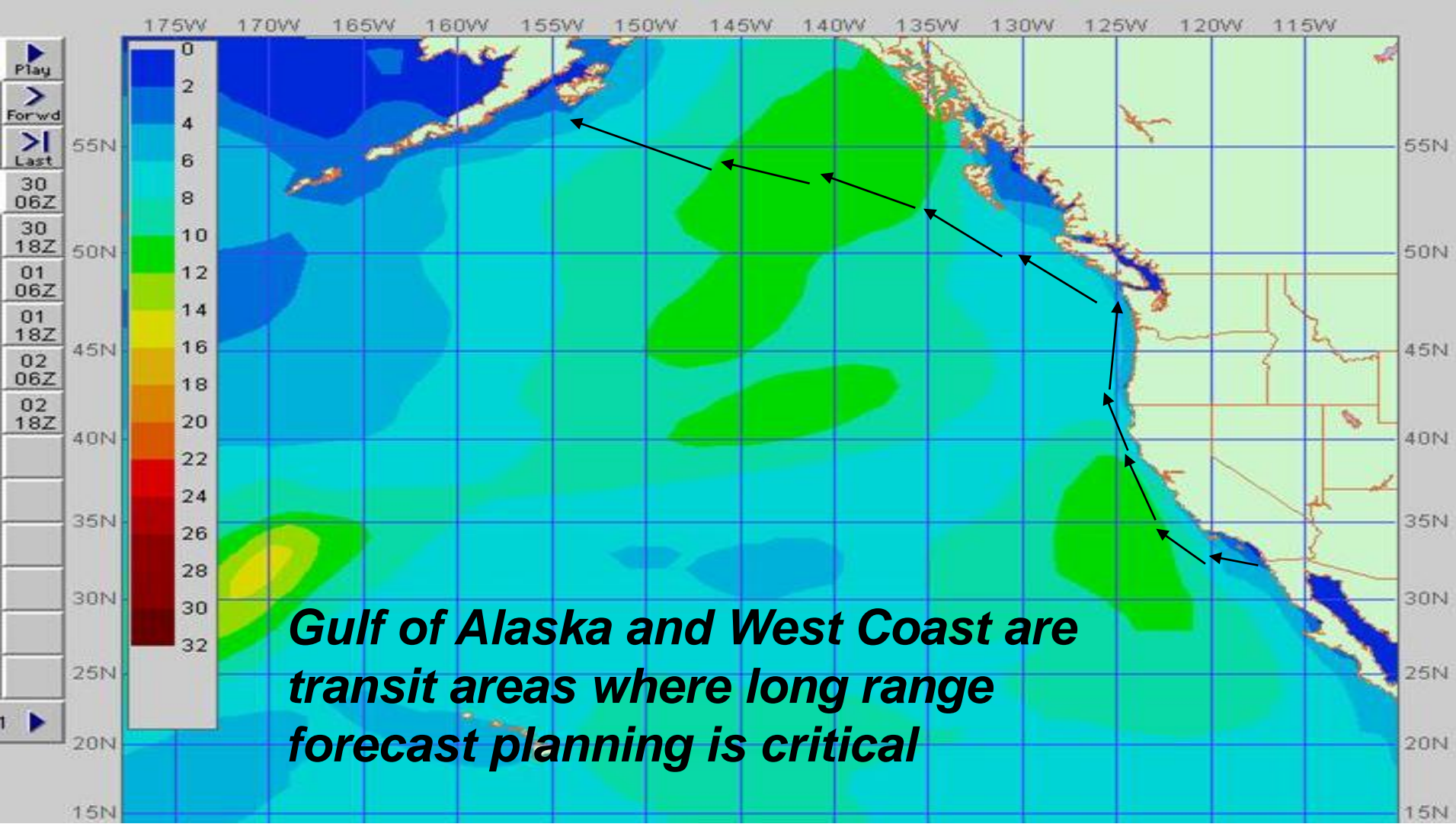
Joint Typhoon Warning Center (JTWC)

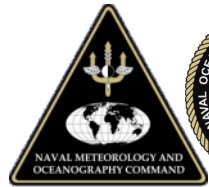
- Tropical Cyclone Forecasts / Warning services
 - Northwest Pacific Ocean
 - South Pacific Ocean
 - Indian Ocean
- PH Sortie Recommendations
- FWC-SD retains OTSR responsibility
 - FWC-SD participates in all pre-warning decision making TELCONS





Transit Planning





FWC San Diego Contacts



Command Duty Officer

FWCSD-CDO.FCT@NAVY.MIL

FWCSD-CDO.FCT@NAVY.SMIL.MIL

PLA: FLEWEACEN CA

COM: (619)767-1271

DSN: 312-577-1271

Aviation Watch Supervisor

FWC-ADO.FCT@NAVY.MIL

COM: (619) 545-2196

DSN: 312-735-2196

Ship Routing Officer (OTSR)

FWCSD-SRO.FCT@NAVY.MIL

FWCSD-SRO.FCT@NAVY.SMIL.MIL

COM: (619) 545-2193

DSN: 312-735-2193

FWC-SD monitors the 3rd/5th/7th Fleet mlRC chat windows



Questions



Questions?